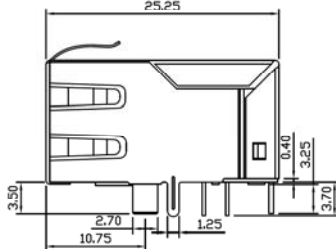
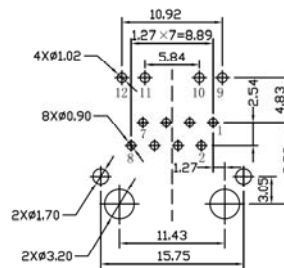


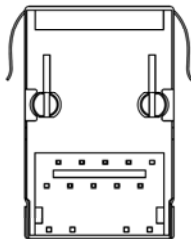
Front Side View



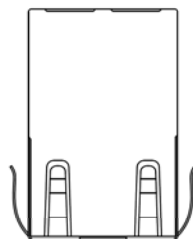
Left Side View



Suggested PCB Layout (Top View)



Bottom Side View



Top Side View

SPECIFICATIONS

Housing: Thermoplastic PBT+30% GF UL94V-0
 Contact: Phosphor Bronze C5210R-EH Thickness=0.35mm
 Pins: Brass C2680R-H Thickness=0.35mm
 Shield: SUS 201-1/2H Thickness=0.2mm
 Contact Plating: Gold 6 micro-inches min. in contact
 Wave Solder Temp: 265C Mac, 5 Sec Max

LED Color Codes	
Code	LED
R	Red
G	Green
Y	Yellow
O	Orange
A	Amber
D	Red/Green
E	Red/Yellow
W	Yellow/Green
P	Orange/Green
K	Blank

Panel Grounds (X)	
Blank	None
1,2	Top
4	Sides
6	Both

Series	Positions	Contacts	Body Style	LED	Color	Plating	Options
CTJ	8	08	M1026	LXX	BK	PX	XX
Modular jack, single position	8 Pos.	8 Contacts	Mag Jack Type 1026	L=LEDs XX=Left/Right (see chart)	BK=Black	P0=6μ" P1=15μ" P2=30μ" P3=50μ"	Blank=None FSX=Full shield (see chart)

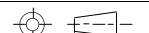
RoHS compliant

Rev.	Description	Date	Approved	Drawing	Name	Date
				Approved	Howard	06/08'07
				Checked	Lizzy	06/08'07
				Drawn	Tina	06/08'07
				0.0 ± 0.35	0.00 ± 0.20	Angles ± 3'
				UNIT: mm		

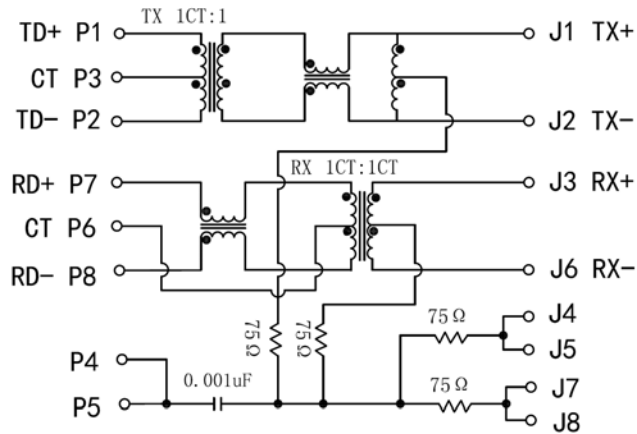
Central Components Manufacturing
 440 Lincoln Blvd., Middlesex, New Jersey 08846
 Phone 732 469-5720 888 288-5152 Fax 732 469-1919

Part No.: **CTJ-8-08-M1026LYG-BK-PX-FS6**

Description: RJ45 Connector with 10/100 Base-T Integrated Magnetics and LEDs



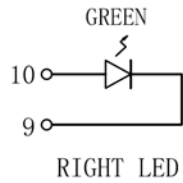
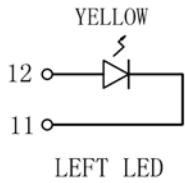
PC BOARD CONNECTIONS



RJ45 CONNECTOR

SPECIFICATIONS

Turn Ratio: TX=1CT:1 RX=1CT:1CT
 Inductance OCL: 350uH Min @100KHz 0.1V 8mA DC Bias
 Insertion Loss: -1.0dB TYP @1-65MHz
 Return Loss (dB TYP @100Ω±15Ω):
 -20dB TYP @1-10MHz
 -16dB TYP @10-30MHz
 -12dB TYP @30-60MHz
 -10dB TYP @60-100MHz
 Cross Talk: -40dB TYP @1-30MHz
 -35dB TYP @30-60MHz
 -30dB TYP @60-100MHz
 Common Mode Rejection:
 -30dB TYP @1-50MHz
 -20dB TYP @50-150MHz
 Hipot Test: 1500Vrms @60Hz
 Operating Temp: 0C to 70C



Rev.	Description	Date	Approved	Drawing	Name	Date
				Approved	Howard	06/08'07
				Checked	Lizzy	06/08'07
				Drawn	Tina	06/08'07
				0.0 ± 0.35	0.00 ± 0.20	Angles ± 3'
					UNIT: mm	

Central Components Manufacturing
 440 Lincoln Blvd., Middlesex, New Jersey 08846
 Phone 732 469-5720 888 288-5152 Fax 732 469-1919

Part No.: **CTJ-8-08-M1026LYG-BK-PX-FS6**

Description: RJ45 Connector with 10/100 Base-T Integrated Magnetics and LEDs