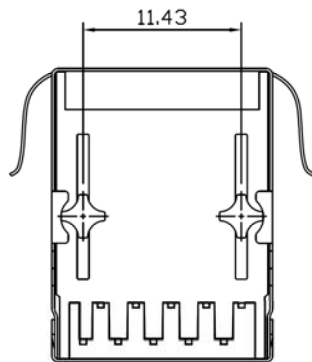


SUGGESTED PCB LAYOUT (TOP VIEW)



SPECIFICATIONS

Housing: Thermoplastic UL94V-0
 Contact/Shield: Copper Alloy
 Shield Plating: Nickel
 Contact Plating: Gold 6 micro-inches min. in contact area
 Solder Temperature: 265°C Max @ 5 Sec Max

Series	Positions	Contacts	Style	Color	Plating	Shield/Panel Grounds
CTJ	8	08	M0520	BK	PX	FSX
Modular jack	8 positions	8 contacts	Side Entry Bottom Latch	BK=Black	Gold P0=6µ" gold P1=15µ" gold P2=30µ" gold P3=50µ" gold	FS=Full Shield X (Panel Grounds) Blank=None 2=Top 4=Sides 6=Top & Sides

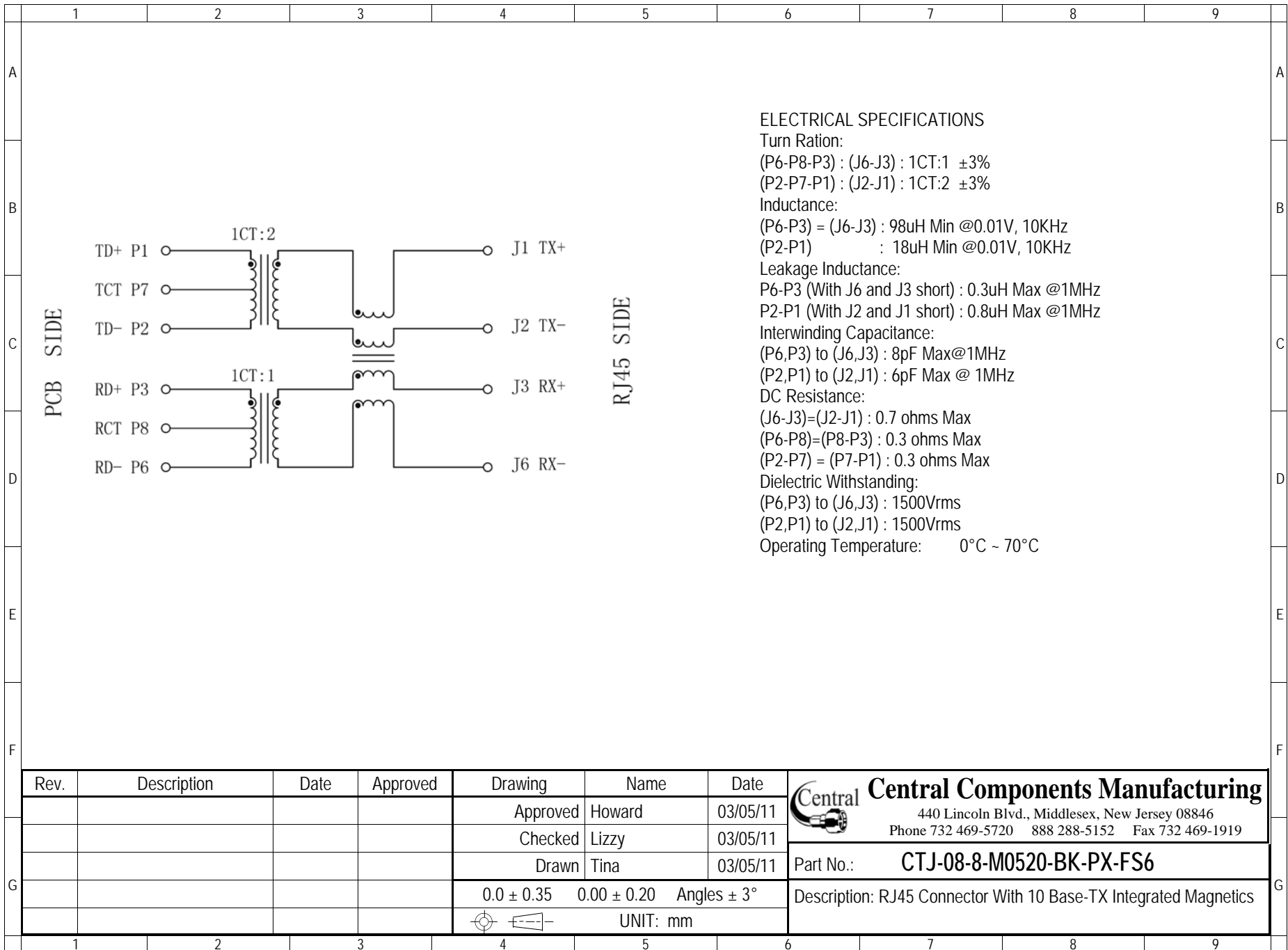
RoHS compliant

Rev.	Description	Date	Approved	Drawing	Name	Date
				Approved	Howard	03/05/11
				Checked	Lizzy	03/05/11
				Drawn	Tina	03/05/11
				0.0 ± 0.35	0.00 ± 0.20	Angles ± 3°
				UNIT: mm		

Central Components Manufacturing
 440 Lincoln Blvd., Middlesex, New Jersey 08846
 Phone 732 469-5720 888 288-5152 Fax 732 469-1919

Part No.: **CTJ-8-08-M0520-BK-PX-FS6** Description:

RJ45 Connector With 10 Base-TX Integrated Magnetics



ELECTRICAL SPECIFICATIONS

Turn Ratio:

(P6-P8-P3) : (J6-J3) : 1CT:1 ±3%

(P2-P7-P1) : (J2-J1) : 1CT:2 ±3%

Inductance:

(P6-P3) = (J6-J3) : 98uH Min @0.01V, 10KHz

(P2-P1) : 18uH Min @0.01V, 10KHz

Leakage Inductance:

P6-P3 (With J6 and J3 short) : 0.3uH Max @1MHz

P2-P1 (With J2 and J1 short) : 0.8uH Max @1MHz

Interwinding Capacitance:

(P6,P3) to (J6,J3) : 8pF Max@1MHz

(P2,P1) to (J2,J1) : 6pF Max @ 1MHz

DC Resistance:

(J6-J3)=(J2-J1) : 0.7 ohms Max

(P6-P8)=(P8-P3) : 0.3 ohms Max

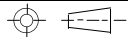
(P2-P7) = (P7-P1) : 0.3 ohms Max


Dielectric Withstanding:

(P6,P3) to (J6,J3) : 1500Vrms

(P2,P1) to (J2,J1) : 1500Vrms

Operating Temperature: 0°C ~ 70°C

Rev.	Description	Date	Approved	Drawing	Name	Date
				Approved	Howard	03/05/11
				Checked	Lizzy	03/05/11
				Drawn	Tina	03/05/11
				0.0 ± 0.35	0.00 ± 0.20	Angles ± 3°
						UNIT: mm



Central Components Manufacturing
440 Lincoln Blvd., Middlesex, New Jersey 08846
Phone 732 469-5720 888 288-5152 Fax 732 469-1919

Part No.: **CTJ-08-8-M0520-BK-PX-FS6**

Description: RJ45 Connector With 10 Base-TX Integrated Magnetics