

SPECIFICATIONS
 Housing Material: Thermoplastic UL94V-0
 Contact/Shield: Copper Alloy
 Shield Plating: Nickel
 Contact Plating: Gold 6 micro-inches min. in contact area
 Wave Solder Tip Temp: 265C Max @ 5 Seconds Max

SUGGESTED PCB LAYOUT (TOP VIEW)

RECOMMENDED PANEL CUTOUT DIMENSION

Series	Positions	Contacts	Style	LED	Color	Plating	Options	Panel Grounds
CTJ	8	08	M0152L	GY	BK	PX	XX	PGX
Modular jack	8 positions	8 contacts	M0152L Body Style/Magnetic	Y=Yellow LED (right) G=Green LED (left)	BK=Black	P1=15µ" gold P2=30µ" gold P3=50µ" gold	[blank]=None FS=Full shield	Blank=None 1=Top (single) 2=Top 4=Sides 6=Top & sides

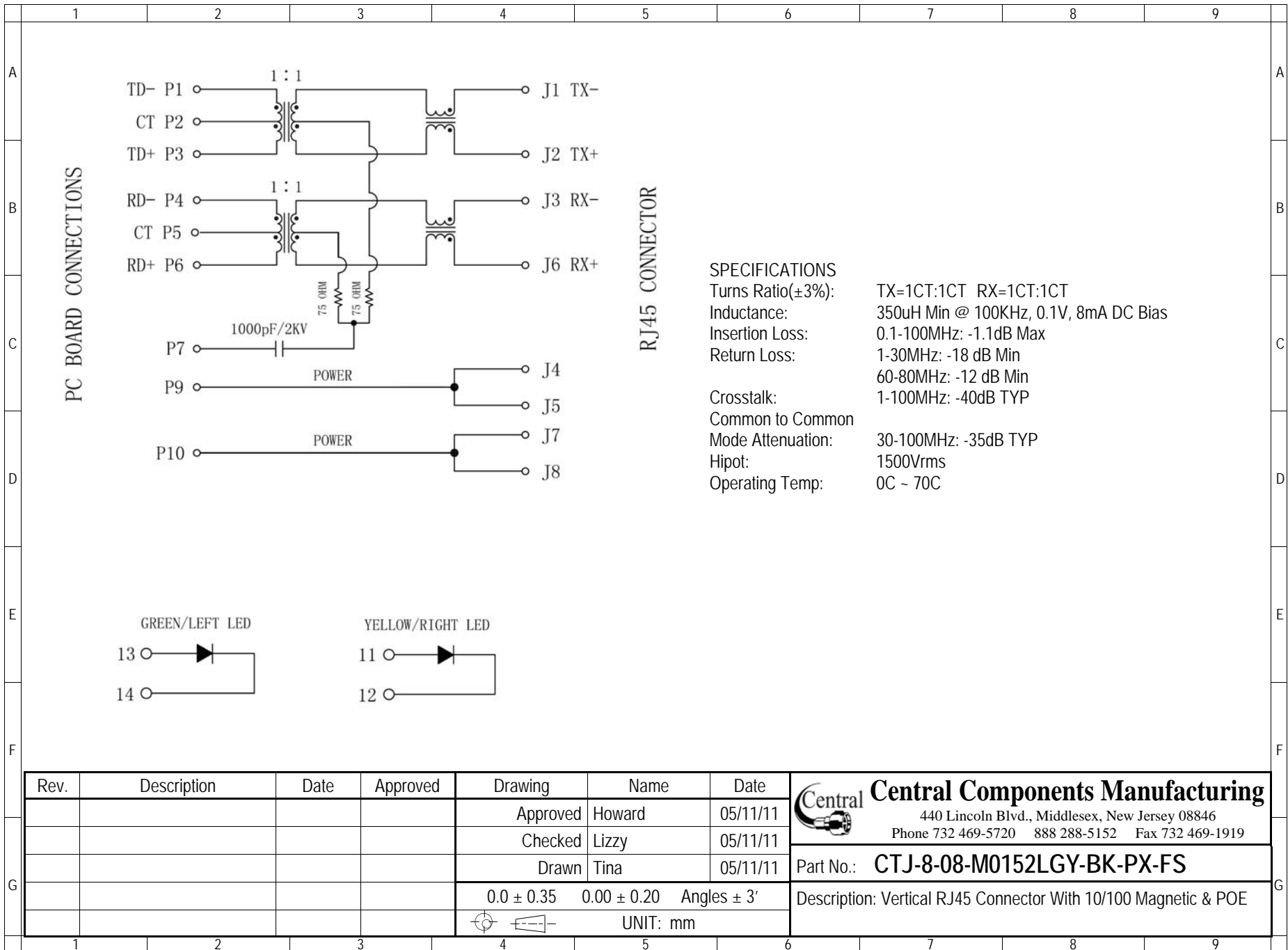
RoHS compliant

Rev.	Description	Date	Approved	Drawing	Name	Date
				Approved	Howard	05/11/11
				Checked	Lizzy	05/11/11
				Drawn	Tina	05/11/11
				0.0 ± 0.35	0.00 ± 0.20	Angles ± 3'
				UNIT: mm		

Central Components Manufacturing
 440 Lincoln Blvd., Middlesex, New Jersey 08846
 Phone 732 469-5720 888 288-5152 Fax 732 469-1919

Part No.: **CTJ-8-08-M0152LGY-BK-PX-FS**

Description: Vertical RJ45 Connector With 10/100 Magnetic & POE



Rev.	Description	Date	Approved	Drawing	Name	Date
				Approved	Howard	05/11/11
				Checked	Lizzy	05/11/11
				Drawn	Tina	05/11/11
				0.0 ± 0.35	0.00 ± 0.20	Angles ± 3'
				UNIT: mm		

Central Components Manufacturing
 440 Lincoln Blvd., Middlesex, New Jersey 08846
 Phone 732 469-5720 888 288-5152 Fax 732 469-1919

Part No.: **CTJ-8-08-M0152LGY-BK-PX-FS**

Description: Vertical RJ45 Connector With 10/100 Magnetic & POE