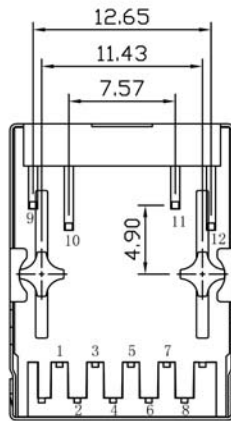


SUGGESTED PCB LAYOUT (TOP VIEW)



SPECIFICATIONS

Housing: Thermoplastic UL94V-0
 Contact/Shield: Copper Alloy, Nickel Plating
 Contact Plating: Gold 6 micro-inches in contact area

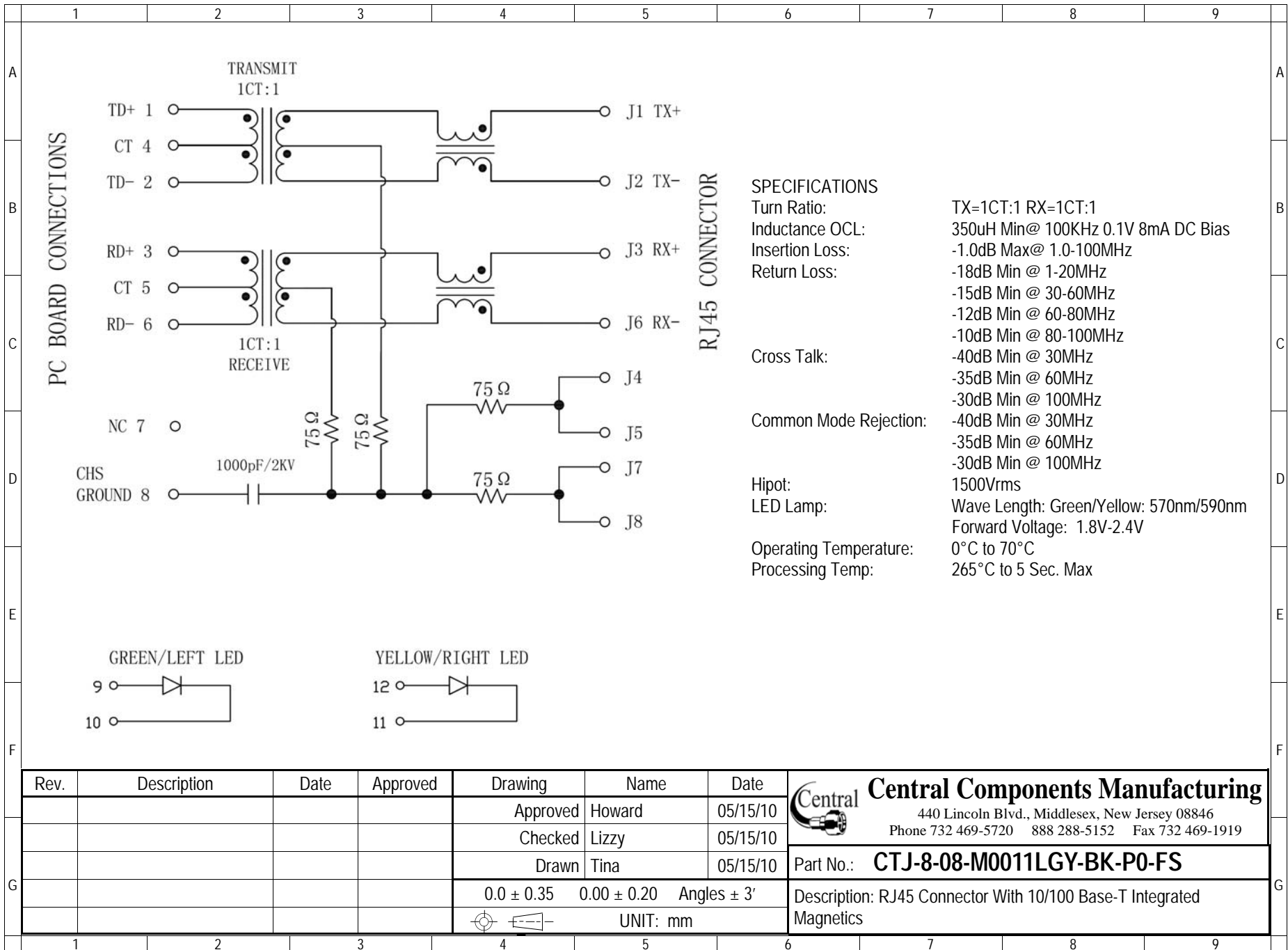
RoHS compliant

Rev.	Description	Date	Approved	Drawing	Name	Date
				Approved	Howard	05/15/10
				Checked	Lizzy	05/15/10
				Drawn	Tina	05/15/10
				0.0 ± 0.35	0.00 ± 0.20	Angles ± 3'
					UNIT: mm	

Central Components Manufacturing
 440 Lincoln Blvd., Middlesex, New Jersey 08846
 Phone 732 469-5720 888 288-5152 Fax 732 469-1919

Part No.: **CTJ-8-08-M0011LGY-BK-P0-FS**

Description: RJ45 Connector With 10/100 Base-T Integrated Magnetics



Rev.	Description	Date	Approved	Drawing	Name	Date
				Approved	Howard	05/15/10
				Checked	Lizzy	05/15/10
				Drawn	Tina	05/15/10
				0.0 ± 0.35	0.00 ± 0.20	Angles ± 3'
					UNIT: mm	

Central Components Manufacturing
440 Lincoln Blvd., Middlesex, New Jersey 08846
Phone 732 469-5720 888 288-5152 Fax 732 469-1919

Part No.: **CTJ-8-08-M0011LGY-BK-P0-FS**

Description: RJ45 Connector With 10/100 Base-T Integrated Magnetics