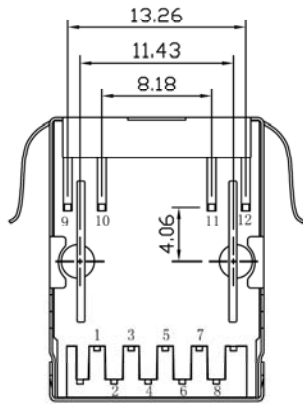


SUGGESTED PCB LAYOUT (TOP VIEW)



SPECIFICATIONS

Housing: Thermoplastic UL94V-0
 Contact/Shield: Copper Alloy, Nickel Plating
 Contact Plating: Gold 6 micro-inches in contact area
 Solder Temp: 265C @ 5 Sec Max.

Series	Positions	Contacts	Body Style	LED	Color	Plating	Shield/Panel Grounds
CTJ	8	08	LM0011BL	XX	BK	PX	FSX
Modular jack	8 positions	8 contacts	Side entry shielded mag jack	Left then right LED XX: R=Red G=Green Y=Yellow O=Orange A=Amber	BK=Black	Gold P0=6u" P1=15µ" gold P2=30µ" gold P3=50µ" gold	FS=Full Shield X (Panel Grounds) Blank=None 2=Top 4=Sides 6=Top & Sides

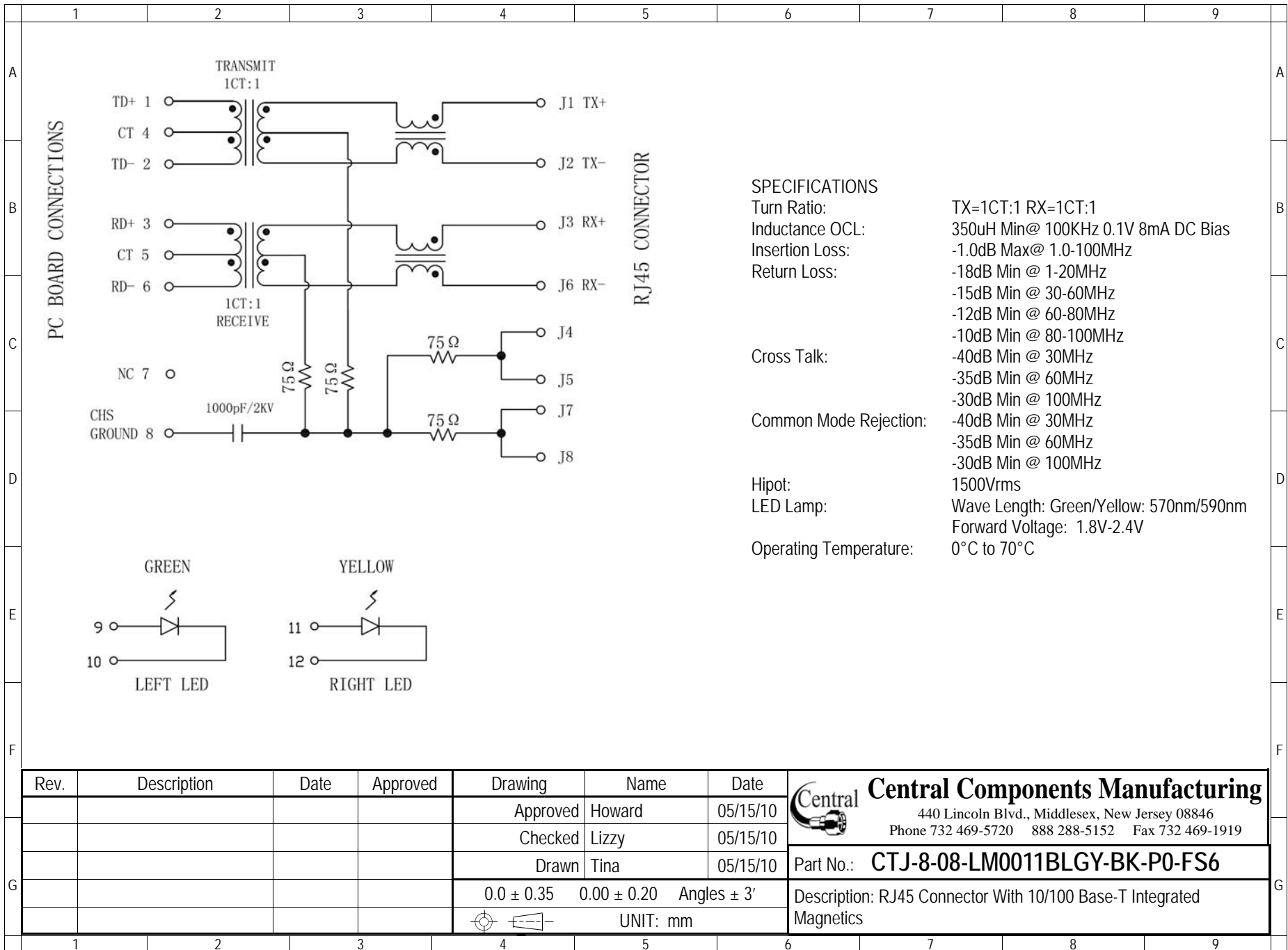
RoHS compliant

Rev.	Description	Date	Approved	Drawing	Name	Date
				Approved	Howard	05/15/10
				Checked	Lizzy	05/15/10
				Drawn	Tina	05/15/10
				0.0 ± 0.35	0.00 ± 0.20	Angles ± 3'
				UNIT: mm		

Central Components Manufacturing
 440 Lincoln Blvd., Middlesex, New Jersey 08846
 Phone 732 469-5720 888 288-5152 Fax 732 469-1919

Part No.: **CTJ-8-08-LM0011BLGY-BK-P0-FS6**

Description: RJ45 Connector With 10/100 Base-T Integrated Magnetics



SPECIFICATIONS

Turn Ratio:	TX=1CT:1 RX=1CT:1
Inductance OCL:	350uH Min@ 100KHz 0.1V 8mA DC Bias
Insertion Loss:	-1.0dB Max@ 1.0-100MHz
Return Loss:	-18dB Min @ 1-20MHz
	-15dB Min @ 30-60MHz
	-12dB Min @ 60-80MHz
	-10dB Min @ 80-100MHz
Cross Talk:	-40dB Min @ 30MHz
	-35dB Min @ 60MHz
	-30dB Min @ 100MHz
Common Mode Rejection:	-40dB Min @ 30MHz
	-35dB Min @ 60MHz
	-30dB Min @ 100MHz
Hipot:	1500Vrms
LED Lamp:	Wave Length: Green/Yellow: 570nm/590nm
	Forward Voltage: 1.8V-2.4V
Operating Temperature:	0°C to 70°C

Rev.	Description	Date	Approved	Drawing	Name	Date
				Approved	Howard	05/15/10
				Checked	Lizzy	05/15/10
				Drawn	Tina	05/15/10
				0.0 ± 0.35	0.00 ± 0.20	Angles ± 3'
					UNIT: mm	

Central Components Manufacturing
 440 Lincoln Blvd., Middlesex, New Jersey 08846
 Phone 732 469-5720 888 288-5152 Fax 732 469-1919

Part No.: **CTJ-8-08-LM0011BLGY-BK-P0-FS6**

Description: RJ45 Connector With 10/100 Base-T Integrated Magnetics