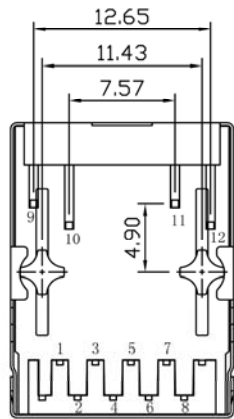


SUGGESTED PCB LAYOUT (TOP VIEW)



**SPECIFICATIONS**

Housing: Thermoplastic UL94V-0  
 Contact/Shield: Copper Alloy  
 Shield Plating: Nickel  
 Contact Plating: Gold 6 micro-inches in contact area  
 Solder Temp: 265°C Max @ 5 Sec Max

| Series                        | Positions | Contacts | Body Style                        | LED  | Color    | Plating                                 | Options  |
|-------------------------------|-----------|----------|-----------------------------------|--|----------|---|--|
| CTJ                           | X         | XX       | LM0011B                           | LXX  | BK       | PX                                      | XX   |
| Modular jack, single position | 4-10      | 02-10    | Side entry thru hole bottom latch | (omitted)=no LED<br>Left then right LED<br>R=Red<br>G=Green<br>Y=Yellow<br>K=Blank | BK=Black | P0=6µ"<br>P1=15µ"<br>P2=30µ"<br>P3=50µ" | Blank=None<br>FSY=Full shield<br>Y:Panel Grounds<br>(Omitted)=None<br>2=Top (Dual)<br>4=Sides(Dual)<br>6=Top & sides(Dual) |

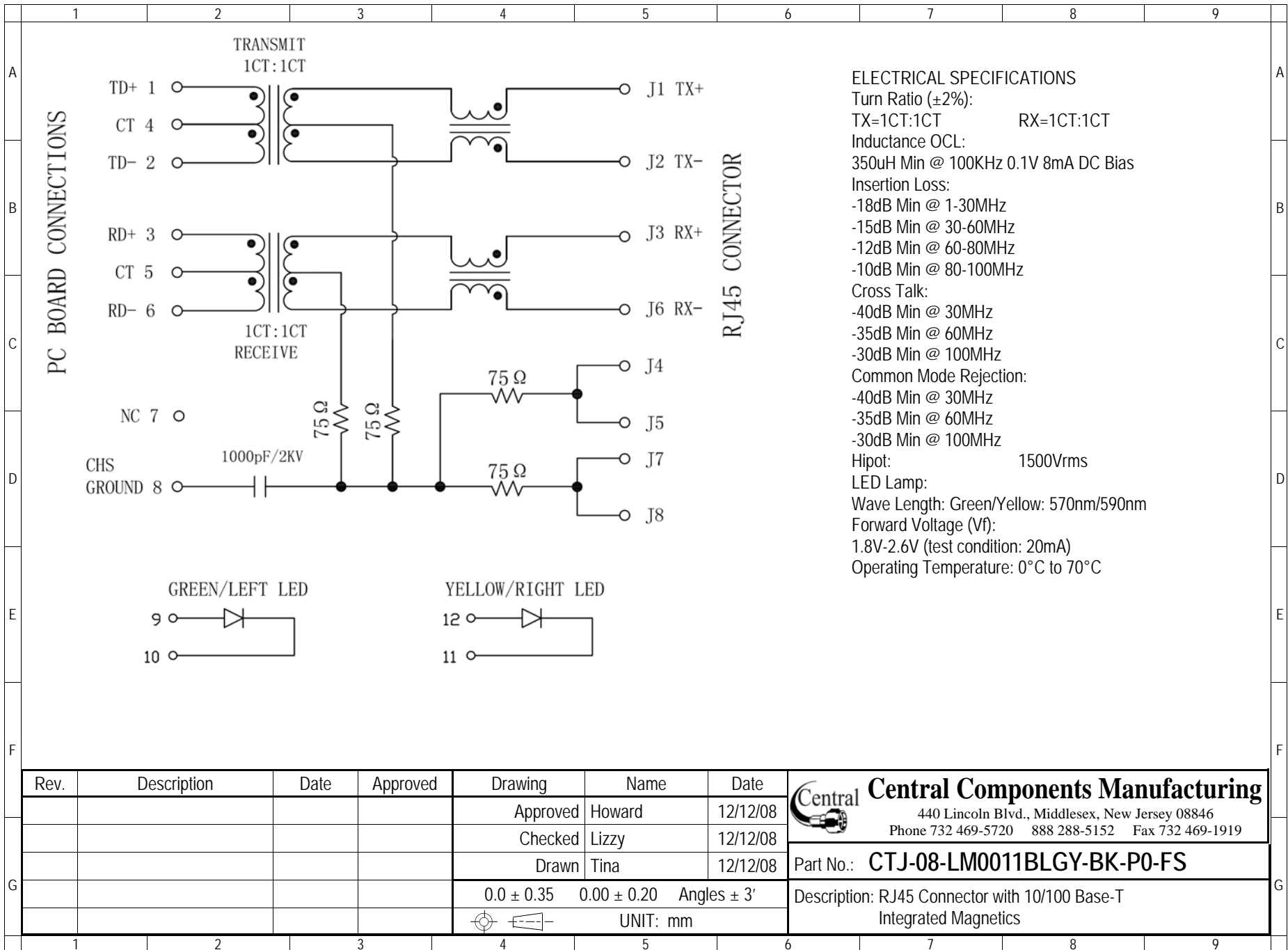
RoHS compliant

| Rev. | Description | Date | Approved | Drawing    | Name        | Date        |
|------|-------------|------|----------|------------|-------------|-------------|
|      |             |      |          | Approved   | Howard      | 12/12/08    |
|      |             |      |          | Checked    | Lizzy       | 12/12/08    |
|      |             |      |          | Drawn      | Tina        | 12/12/08    |
|      |             |      |          | 0.0 ± 0.35 | 0.00 ± 0.20 | Angles ± 3' |
|      |             |      |          | UNIT: mm   |             |             |

**Central Components Manufacturing**  
 440 Lincoln Blvd., Middlesex, New Jersey 08846  
 Phone 732 469-5720 888 288-5152 Fax 732 469-1919

Part No.: **CTJ-8-08-LM0011BLGY-BK-P0-FS**

Description: RJ45 Connector with 10/100 Base-T Integrated Magnetics



**ELECTRICAL SPECIFICATIONS**  
 Turn Ratio ( $\pm 2\%$ ):  
 TX=1CT:1CT      RX=1CT:1CT  
 Inductance OCL:  
 350uH Min @ 100KHz 0.1V 8mA DC Bias  
 Insertion Loss:  
 -18dB Min @ 1-30MHz  
 -15dB Min @ 30-60MHz  
 -12dB Min @ 60-80MHz  
 -10dB Min @ 80-100MHz  
 Cross Talk:  
 -40dB Min @ 30MHz  
 -35dB Min @ 60MHz  
 -30dB Min @ 100MHz  
 Common Mode Rejection:  
 -40dB Min @ 30MHz  
 -35dB Min @ 60MHz  
 -30dB Min @ 100MHz  
 Hipot: 1500Vrms  
 LED Lamp:  
 Wave Length: Green/Yellow: 570nm/590nm  
 Forward Voltage (Vf):  
 1.8V-2.6V (test condition: 20mA)  
 Operating Temperature: 0°C to 70°C

| Rev. | Description | Date | Approved | Drawing    | Name        | Date        |
|------|-------------|------|----------|------------|-------------|-------------|
|      |             |      |          | Approved   | Howard      | 12/12/08    |
|      |             |      |          | Checked    | Lizzy       | 12/12/08    |
|      |             |      |          | Drawn      | Tina        | 12/12/08    |
|      |             |      |          | 0.0 ± 0.35 | 0.00 ± 0.20 | Angles ± 3' |
|      |             |      |          |            | UNIT: mm    |             |

**Central Components Manufacturing**  
 440 Lincoln Blvd., Middlesex, New Jersey 08846  
 Phone 732 469-5720 888 288-5152 Fax 732 469-1919

Part No.: **CTJ-08-LM0011BLGY-BK-P0-FS**

Description: RJ45 Connector with 10/100 Base-T Integrated Magnetics