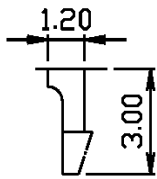
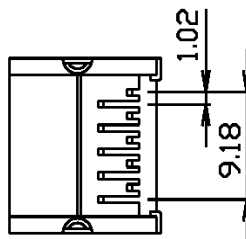


PC Board Layout



DETAIL X



SPECIFICATIONS

Housing material: PBT polyester, mixed glass fiber, UL94V-0, black
 Contact material: Phosphor bronze, $\varnothing 0.45\text{mm}$
 Contact plating: Gold
 Shield material: Copper alloy 0.25mm
 Shield plating: Nickel

NOTE: Cavity conforms to FCC rules and regulations Part 68, subpart F

Series	Positions	Contacts	Style	Color	Plating	Options
CTJ	X	XX	CHP	BK	PX	XX
Modular jack, single position	8=8 positions 10=10 positions	06=6 contacts 08=8 contacts 10=10 contacts	C=C style HP=Half peg	BK=Black	P1=15 μ " P2=30 μ " P3=50 μ "	[blank]=None FS=Full shield

RoHS compliant

Rev.	Description	Date	Approved	Drawing	Name	Date
				Approved	Howard	08/10/99
				Checked	Lizzy	08/10/99
				Drawn	Tina	08/10/99
				0.0 \pm 0.35	0.00 \pm 0.20	Angles \pm 3'
						UNIT: mm

Central Components Manufacturing
 440 Lincoln Blvd., Middlesex, New Jersey 08846
 Phone 732 469-5720 888 288-5152 Fax 732 469-1919

Part No.: **CTJ-8-08-CHP-BK-PX-FS**

Description: Modular jack, PCB mount, side entry, mini low profile, 8 positions, shielded, half peg