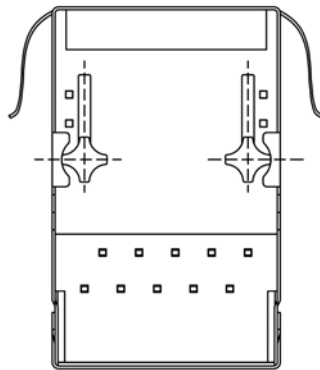


SUGGESTED PCB LAYOUT (TOP VIEW)



SPECIFICATIONS

Designed to support applications such as SOHO (ADSL modems), LAN-on-Motherboard (LOM), hub and switches.

Meets IEEE 802.3 specifications.

Housing Material: Thermoplastic UL94V-0

Contact Material: Copper Alloy, Gold 6 micro-inches min. in Contact area

Shield Plating: Nickel

Wave Solder Temp: 265C Max. /5 seconds

Series	Positions	Contacts	Type	Color	Plating	Options	Panel Grounds
CTJ	8	08	AF3014LGG	BK	P1	FS	PG6
Mod jack, single port	8=8 positions	08=8 contacts	AF3014L Style G=Green LEDs	BK=Black	P1=15µ" gold P2=30µ" gold P3=50µ" gold	[blank]=No shield FS=Full shield	[blank]=None 2=Top 4=Side 6=Top and sides

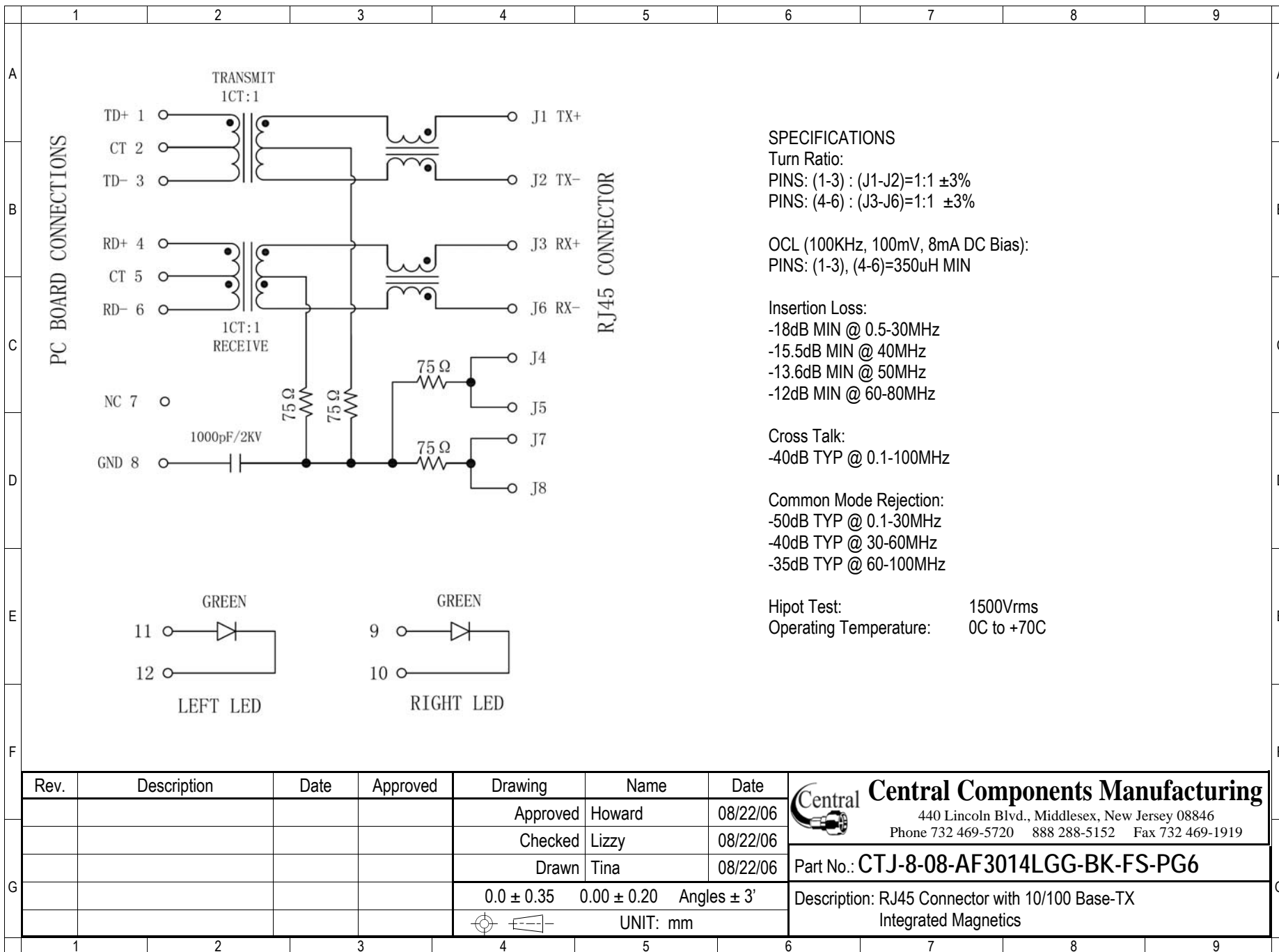
RoHS compliant

Rev.	Description	Date	Approved	Drawing	Name	Date
				Approved	Howard	08/22/06
				Checked	Lizzy	08/22/06
				Drawn	Tina	08/22/06
				0.0 ± 0.35	0.00 ± 0.20	Angles ± 3'
					UNIT: mm	

Central Components Manufacturing
 440 Lincoln Blvd., Middlesex, New Jersey 08846
 Phone 732 469-5720 888 288-5152 Fax 732 469-1919

Part No.: **CTJ-8-08-AF3014LGG-BK-FS-PG6**

Description: RJ45 Connector with 10/100 Base-TX Integrated Magnetics



SPECIFICATIONS

Turn Ratio:
 PINS: (1-3) : (J1-J2)=1:1 ±3%
 PINS: (4-6) : (J3-J6)=1:1 ±3%

OCL (100KHz, 100mV, 8mA DC Bias):
 PINS: (1-3), (4-6)=350uH MIN

Insertion Loss:
 -18dB MIN @ 0.5-30MHz
 -15.5dB MIN @ 40MHz
 -13.6dB MIN @ 50MHz
 -12dB MIN @ 60-80MHz

Cross Talk:
 -40dB TYP @ 0.1-100MHz

Common Mode Rejection:
 -50dB TYP @ 0.1-30MHz
 -40dB TYP @ 30-60MHz
 -35dB TYP @ 60-100MHz

Hipot Test: 1500Vrms
 Operating Temperature: 0C to +70C

Rev.	Description	Date	Approved	Drawing	Name	Date
				Approved	Howard	08/22/06
				Checked	Lizzy	08/22/06
				Drawn	Tina	08/22/06
				0.0 ± 0.35	0.00 ± 0.20	Angles ± 3'
					UNIT: mm	

Central Components Manufacturing
 440 Lincoln Blvd., Middlesex, New Jersey 08846
 Phone 732 469-5720 888 288-5152 Fax 732 469-1919

Part No.: CTJ-8-08-AF3014LGG-BK-FS-PG6

Description: RJ45 Connector with 10/100 Base-TX
 Integrated Magnetics