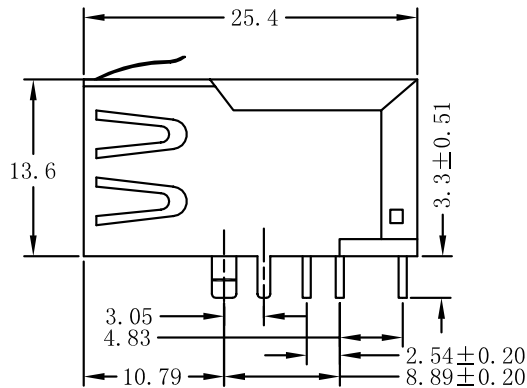
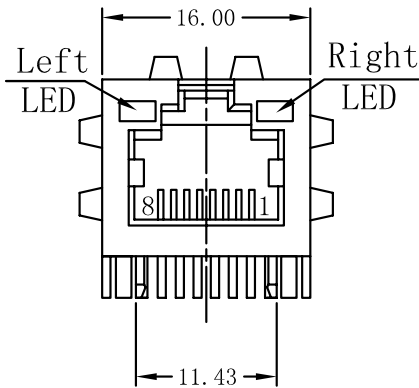


PC Board Layout
Component Side Shown



SPECIFICATIONS

- Contact Pin Material: Phosphor Bronze C5210
EH—.35mm Thick
Plating(1) Nickel 30u" ~70u"
Plating(2) 100%Sn 100u " ~150u"
- Housing Material: Nylon GF (Fr50) UL94V-0, Black
Insert Material: Phosphor Bronze C5210
EH—0.35mm Thickness
Insert—PBT GF UL94V-0
Plating(1) Nickel 50u " ~80u"
Plating(2) 100%Sn 100u " ~150u"
Plating(3) Gold (3u " ~50u")
- Plate Material: PBT GF UL 94V-0
Shield Material: Brass C2680 H.—0.25mm Thickness
Plating Nickel 30U"—50U"
- Operating Life: 750 Cycles MIN
Operating Temp: 0°C to +70°C
Wave Soldering Temp: 230~250°C(3~5 seconds)
Storage Temp: -40°C TO+85°C
Inductance: 350uH MIN
HI-POT: 1500Vrms/0.5mA/2Sec
Turn Ratio: TX=1CT:1,RX=1CT:1CT
Insertion Loss: -1.0dB TYP
Return Loss: -18dB 1-30MHz
-12dB 30-100MHz
- Crosstalk: -40dB 1-100MHz TYP
CMR: -35dB 30-100MHz TYP

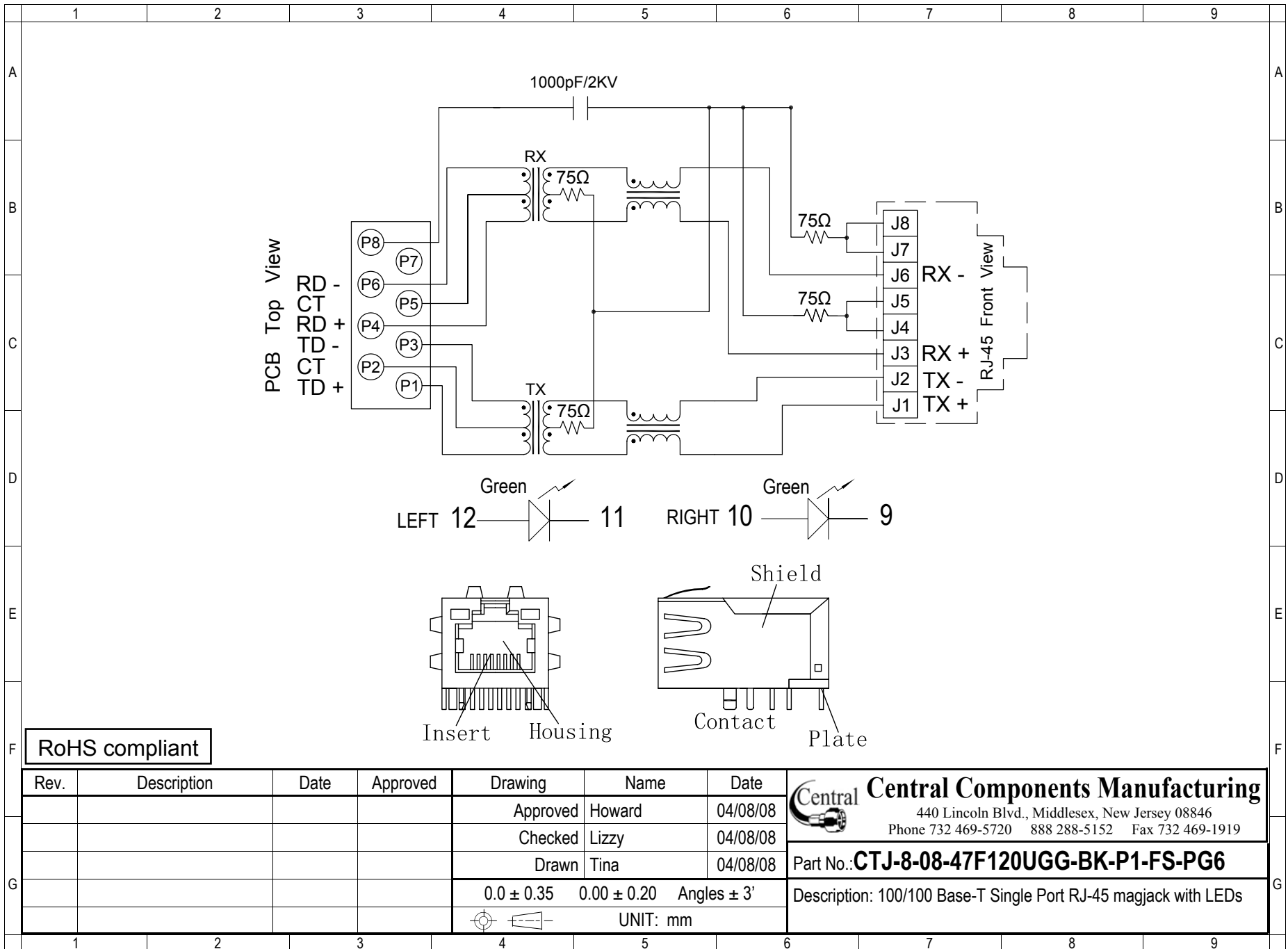
RoHS compliant

| Rev. | Description | Date | Approved | Drawing | Name | Date |
|------|-------------|------|----------|------------|-------------|-------------|
| | | | | Approved | Howard | 04/08/08 |
| | | | | Checked | Lizzy | 04/08/08 |
| | | | | Drawn | Tina | 04/08/08 |
| | | | | 0.0 ± 0.35 | 0.00 ± 0.20 | Angles ± 3' |
| | | | | | | UNIT: mm |

Central Components Manufacturing
440 Lincoln Blvd., Middlesex, New Jersey 08846
Phone 732 469-5720 888 288-5152 Fax 732 469-1919

Part No.: **CTJ-8-08-47F120UGG-BK-P1-FS-PG6**

Description: 100/100 Base-T Single Port RJ-45 magjack with LEDs



RoHS compliant

| Rev. | Description | Date | Approved | Drawing | Name | Date |
|------|-------------|------|----------|------------|-------------|-------------|
| | | | | Approved | Howard | 04/08/08 |
| | | | | Checked | Lizzy | 04/08/08 |
| | | | | Drawn | Tina | 04/08/08 |
| | | | | 0.0 ± 0.35 | 0.00 ± 0.20 | Angles ± 3' |
| | | | | | UNIT: mm | |

Central Components Manufacturing
 440 Lincoln Blvd., Middlesex, New Jersey 08846
 Phone 732 469-5720 888 288-5152 Fax 732 469-1919

Part No.: **CTJ-8-08-47F120UGG-BK-P1-FS-PG6**

Description: 100/100 Base-T Single Port RJ-45 magjack with LEDs