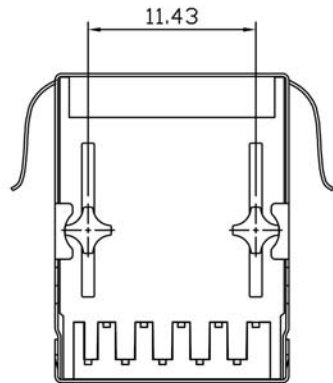


SUGGESTED PCB LAYOUT (TOP VIEW)



**SPECIFICATIONS**

Designed to support application, such as SOHO (ADSL modems), LAN-on-Motherboard (LOM), hub and Switches.

Meets IEEE 802.3 specification

- Housing Material: Thermoplastic UL94V-0
- Contact/Shield: Copper alloy
- Shield Plating: Nickel
- Contact Plating: Gold 6 micro-inches min. in contact area
- Wave Solder Temp: 265°C Max @ 5 Sec. Max

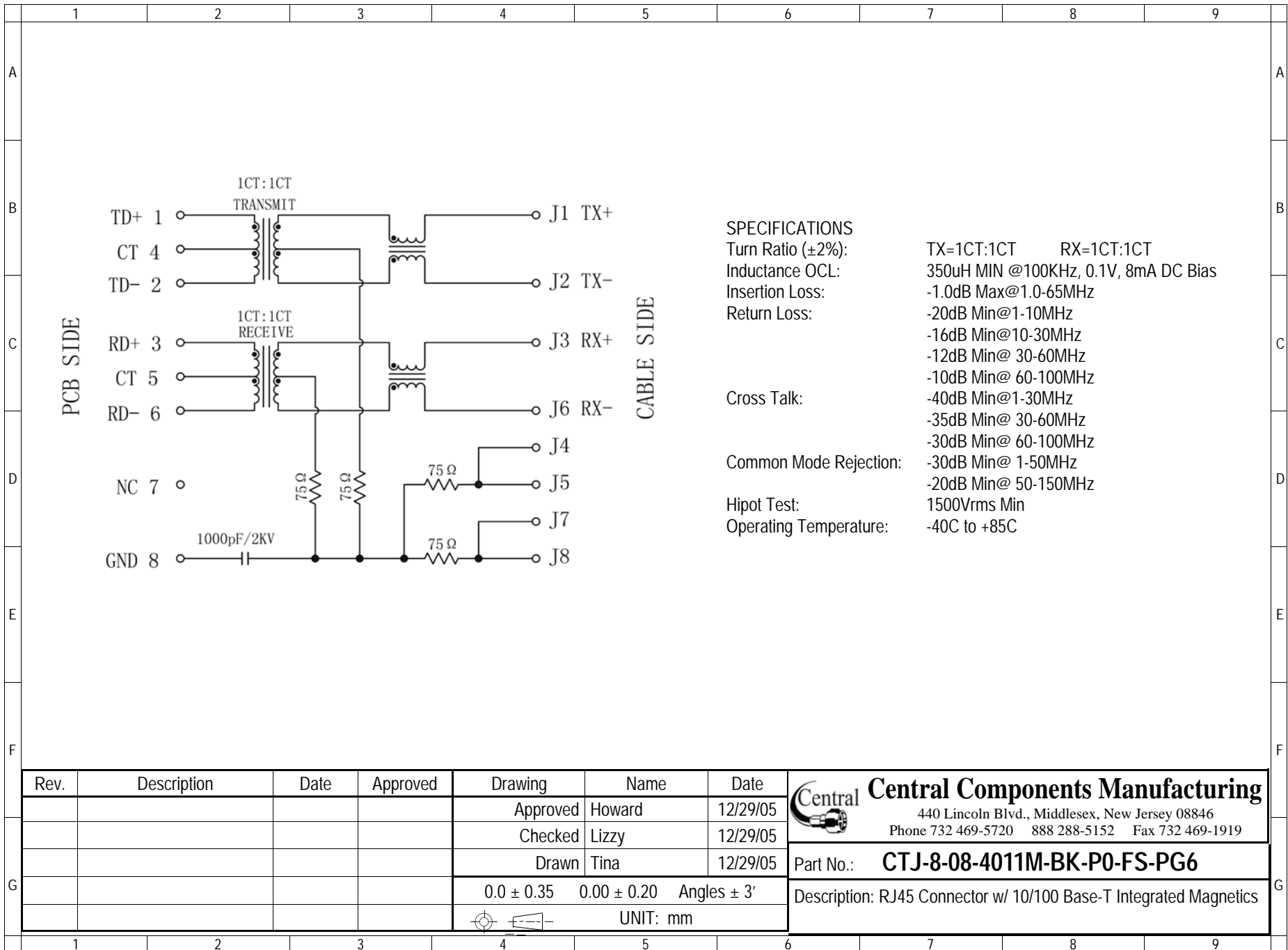
RoHS compliant

Rev.	Description	Date	Approved	Drawing	Name	Date
				Approved	Howard	12/29/05
				Checked	Lizzy	12/29/05
				Drawn	Tina	12/29/05
				0.0 ± 0.35	0.00 ± 0.20	Angles ± 3'
				UNIT: mm		

**Central Components Manufacturing**  
 440 Lincoln Blvd., Middlesex, New Jersey 08846  
 Phone 732 469-5720 888 288-5152 Fax 732 469-1919

Part No.: **CTJ-8-08-4011M-BK-P0-FS-PG6**

Description: RJ45 Connector w/ 10/100 Base-T Integrated Magnetics



**SPECIFICATIONS**

Turn Ratio ( $\pm 2\%$ ):	TX=1CT:1CT	RX=1CT:1CT
Inductance OCL:	350uH MIN @100KHz, 0.1V, 8mA DC Bias	
Insertion Loss:	-1.0dB Max@1.0-65MHz	
Return Loss:	-20dB Min@1-10MHz	
	-16dB Min@10-30MHz	
	-12dB Min@ 30-60MHz	
	-10dB Min@ 60-100MHz	
Cross Talk:	-40dB Min@1-30MHz	
	-35dB Min@ 30-60MHz	
	-30dB Min@ 60-100MHz	
Common Mode Rejection:	-30dB Min@ 1-50MHz	
	-20dB Min@ 50-150MHz	
Hipot Test:	1500Vrms Min	
Operating Temperature:	-40C to +85C	

Rev.	Description	Date	Approved	Drawing	Name	Date
				Approved	Howard	12/29/05
				Checked	Lizzy	12/29/05
				Drawn	Tina	12/29/05
				0.0 $\pm$ 0.35	0.00 $\pm$ 0.20	Angles $\pm$ 3'
				UNIT: mm		

**Central Components Manufacturing**  
 440 Lincoln Blvd., Middlesex, New Jersey 08846  
 Phone 732 469-5720 888 288-5152 Fax 732 469-1919

Part No.: **CTJ-8-08-4011M-BK-P0-FS-PG6**

Description: RJ45 Connector w/ 10/100 Base-T Integrated Magnetics