

Item	Name	Color	Spec	Notes
1	Gasket	Red	EPDM	M3352R0100
2	Body	Black	NY66	M3352B0100
3	Seal	Red	EPDM	M3352R0200
4	Seal Nut	Black	PBT	M3352R0100

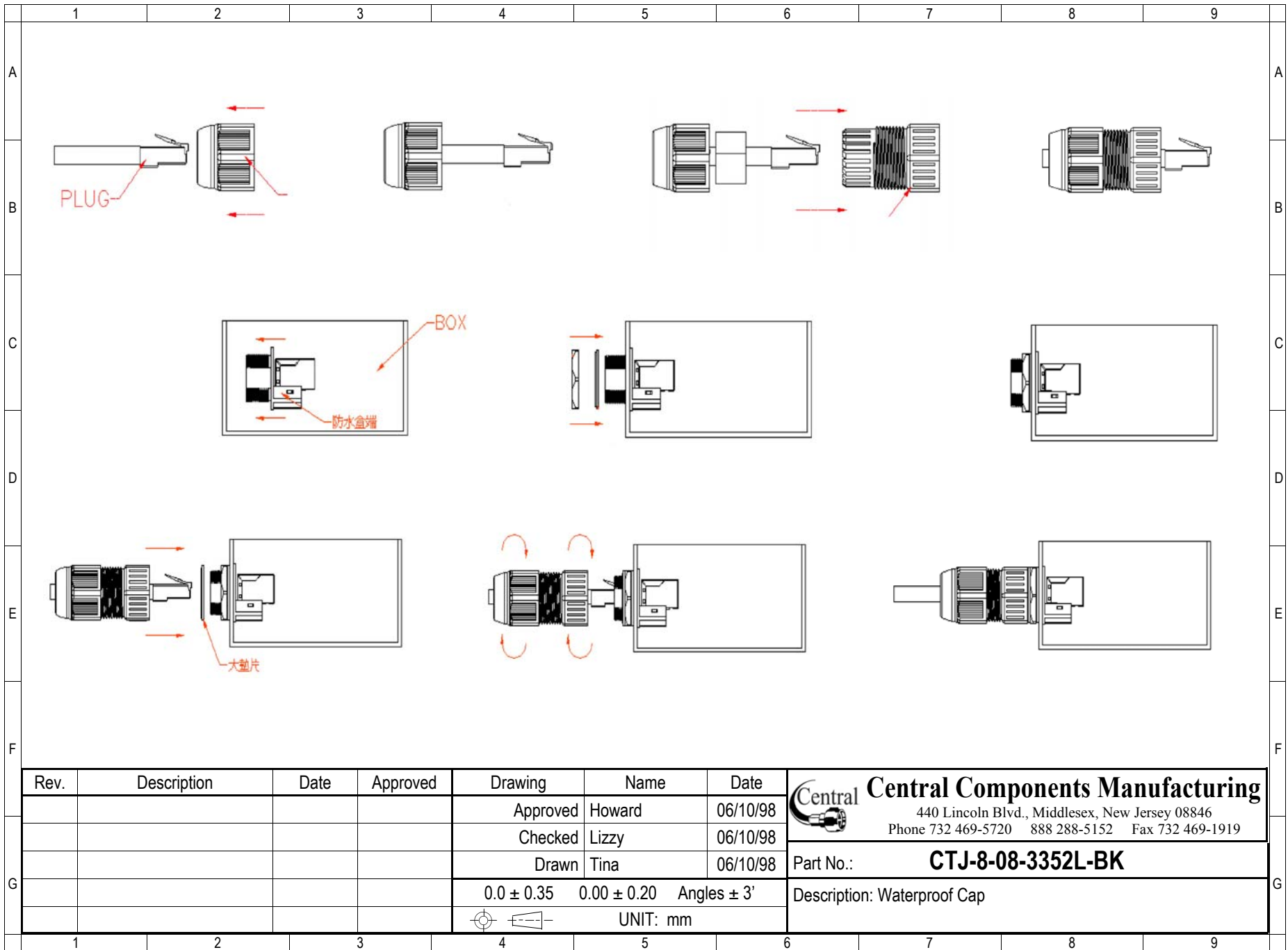
RoHS compliant

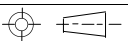
Rev.	Description	Date	Approved	Drawing	Name	Date
				Approved	Howard	06/10/98
				Checked	Lizzy	06/10/98
				Drawn	Tina	06/10/98
				0.0 ± 0.35	0.00 ± 0.20	Angles ± 3'
						UNIT: mm

Central Components Manufacturing
 440 Lincoln Blvd., Middlesex, New Jersey 08846
 Phone 732 469-5720 888 288-5152 Fax 732 469-1919

Part No.: **CTJ-8-08-3352L-BK**

Description: Waterproof Cap



Rev.	Description	Date	Approved	Drawing	Name	Date
				Approved	Howard	06/10/98
				Checked	Lizzy	06/10/98
				Drawn	Tina	06/10/98
				0.0 ± 0.35	0.00 ± 0.20	Angles ± 3'
						UNIT: mm


Central Components Manufacturing
 440 Lincoln Blvd., Middlesex, New Jersey 08846
 Phone 732 469-5720 888 288-5152 Fax 732 469-1919

Part No.: **CTJ-8-08-3352L-BK**

Description: Waterproof Cap