

Panel Cut-Out
Panel Thick: 1.5~2.0mm

SPECIFICATIONS

Plastic Housing: Thermoplastic, UL94V-0
 Contact Material: Phosphor Bronze
 Gold Plating over Nickel
 Nut: Thermoplastic, UL94V-0
 Gasket: EPDM
 Protection: IP67

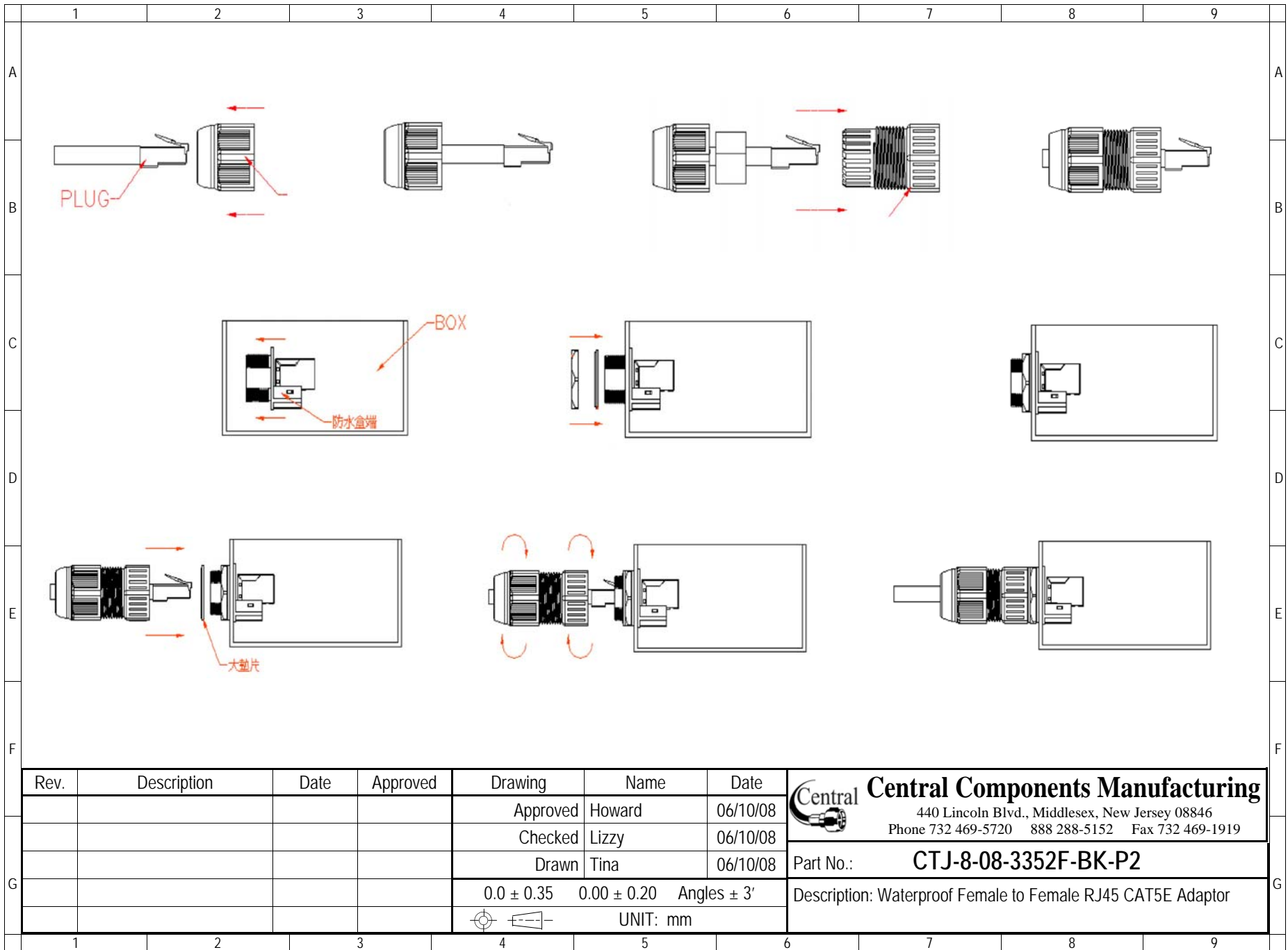
RoHS compliant

Rev.	Description	Date	Approved	Drawing	Name	Date
				Approved	Howard	06/10/08
				Checked	Lizzy	06/10/08
				Drawn	Tina	06/10/08
				0.0 ± 0.35	0.00 ± 0.20	Angles ± 3'
				UNIT: mm		

Central Components Manufacturing
 440 Lincoln Blvd., Middlesex, New Jersey 08846
 Phone 732 469-5720 888 288-5152 Fax 732 469-1919

Part No.: **CTJ-8-08-3352F-BK-P2**

Description: Waterproof Female to Female RJ45 CAT5E Adaptor



Rev.	Description	Date	Approved	Drawing	Name	Date
				Approved	Howard	06/10/08
				Checked	Lizzy	06/10/08
				Drawn	Tina	06/10/08
				0.0 ± 0.35	0.00 ± 0.20	Angles ± 3'
						UNIT: mm

Central Components Manufacturing
 440 Lincoln Blvd., Middlesex, New Jersey 08846
 Phone 732 469-5720 888 288-5152 Fax 732 469-1919

Part No.: **CTJ-8-08-3352F-BK-P2**

Description: Waterproof Female to Female RJ45 CAT5E Adaptor