

SUGGESTED PCB LAYOUT (TOP VIEW)

SPECIFICATIONS

Designed to support applications such as SOHO (ADSL modems), Lan-on-Motherboard (LOM), hub, & switches

Meets IEEE 802.3 specifications

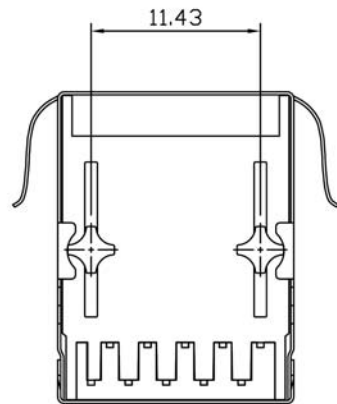
Housing Material: Thermoplastic UL94V-0

Contact Material: Copper Alloy

Shield Plating: Nickel

Contact Plating: Gold 6 micro-inches min. in contact area

Wave Solder Temp: 265C @ 5 Sec Max.



RoHS compliant

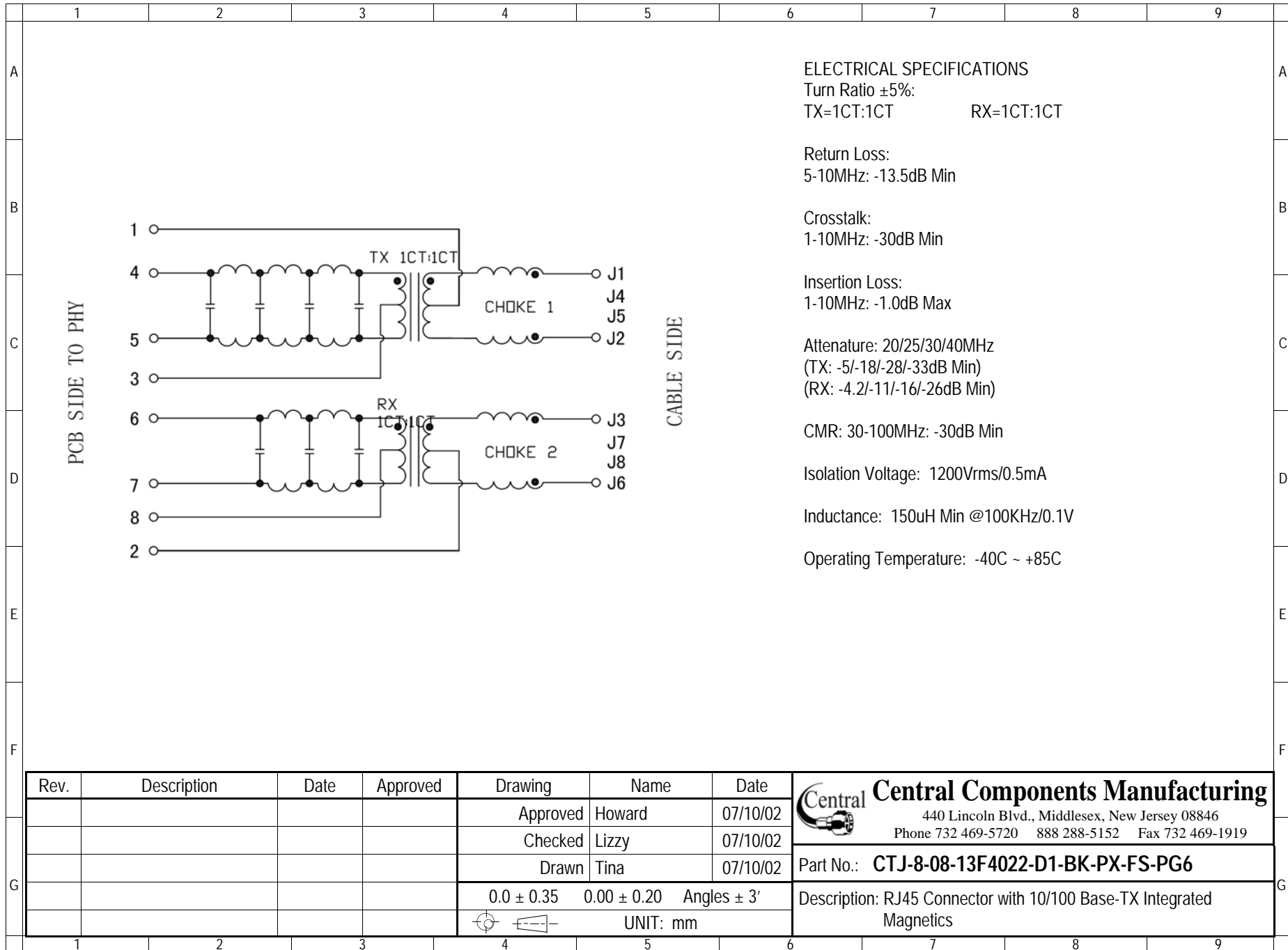
Series	Positions	Contacts	Body Style	Type	Color	Plating	Options	Panel Grounds
CTJ	8	08	13F4022	D1	BK	PX	XX	PGX
Modular Jack	8 Positions	8 Contacts	13F4022 Style	D1 Type	BK=Black	P1=15u" gold P2=30u" gold P3=50u" gold	[blank]=None FS=Full Shield	Black=None 2=Top 4=Sides 6=Top & Sides

Rev.	Description	Date	Approved	Drawing	Name	Date
				Approved	Howard	07/10/02
				Checked	Lizzy	07/10/02
				Drawn	Tina	07/10/02
				0.0 ± 0.35	0.00 ± 0.20	Angles ± 3'
				UNIT: mm		

Central Components Manufacturing
 440 Lincoln Blvd., Middlesex, New Jersey 08846
 Phone 732 469-5720 888 288-5152 Fax 732 469-1919

Part No.: **CTJ-8-08-13F4022-D1-BK-PX-FS-PG6**

Description: RJ45 Connector with 10/100 Base-TX Integrated Magnetics



ELECTRICAL SPECIFICATIONS

Turn Ratio $\pm 5\%$:
 TX=1CT:1CT RX=1CT:1CT

Return Loss:
 5-10MHz: -13.5dB Min

Crosstalk:
 1-10MHz: -30dB Min

Insertion Loss:
 1-10MHz: -1.0dB Max

Attenuation: 20/25/30/40MHz
 (TX: -5/-18/-28/-33dB Min)
 (RX: -4.2/-11/-16/-26dB Min)

CMR: 30-100MHz: -30dB Min

Isolation Voltage: 1200Vrms/0.5mA

Inductance: 150uH Min @100KHz/0.1V

Operating Temperature: -40C ~ +85C

Rev.	Description	Date	Approved	Drawing	Name	Date
				Approved	Howard	07/10/02
				Checked	Lizzy	07/10/02
				Drawn	Tina	07/10/02
				0.0 \pm 0.35	0.00 \pm 0.20	Angles \pm 3'
					UNIT: mm	

Central Components Manufacturing
 440 Lincoln Blvd., Middlesex, New Jersey 08846
 Phone 732 469-5720 888 288-5152 Fax 732 469-1919

Part No.: **CTJ-8-08-13F4022-D1-BK-PX-FS-PG6**

Description: RJ45 Connector with 10/100 Base-TX Integrated Magnetics