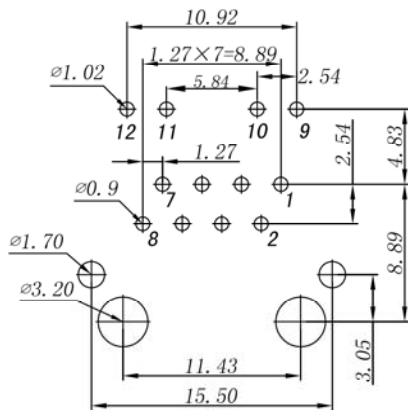


SPECIFICATIONS

TR: (100KHZ 0.1V)
 TX=1CT:1CT ±3% RX=1CT:1CT ±3%
 LX: (100KHz, 100mV, 8mA, DC Bias)
 Pins: (P1, P2), (P7, P8)=350uH Min
 Hipot: Pins (P1, P3, P2) to (J1, J2)=1500VAC for 60sec
 Pins (P7, P6, P8) to (J3, J6)=1500VAC for 60sec
 Insertion Loss: -0.1dB Max @ 1.0MHz to 65MHz
 Return Loss: -20dB Min @ 1MHz to 10MHz
 -16dB Min @ 10MHz to 30MHz
 -12dB Min @ 30MHz to 60MHz
 -10dB Min @ 60MHz to 100MHz
 Cross Talk: -40dB Min @1MHz to 30MHz
 -35dB Min @30MHz to 60MHz
 -30dB Min @60MHz to 100MHz
 Common to Common Mode Rejection:
 -30dB min @1MHz to 50MHz
 -20dB min @50MHz to 150MHz
 Operating Temp: 0C to 70C



SUGGESTED PCB LAYOUT (TOP VIEW)

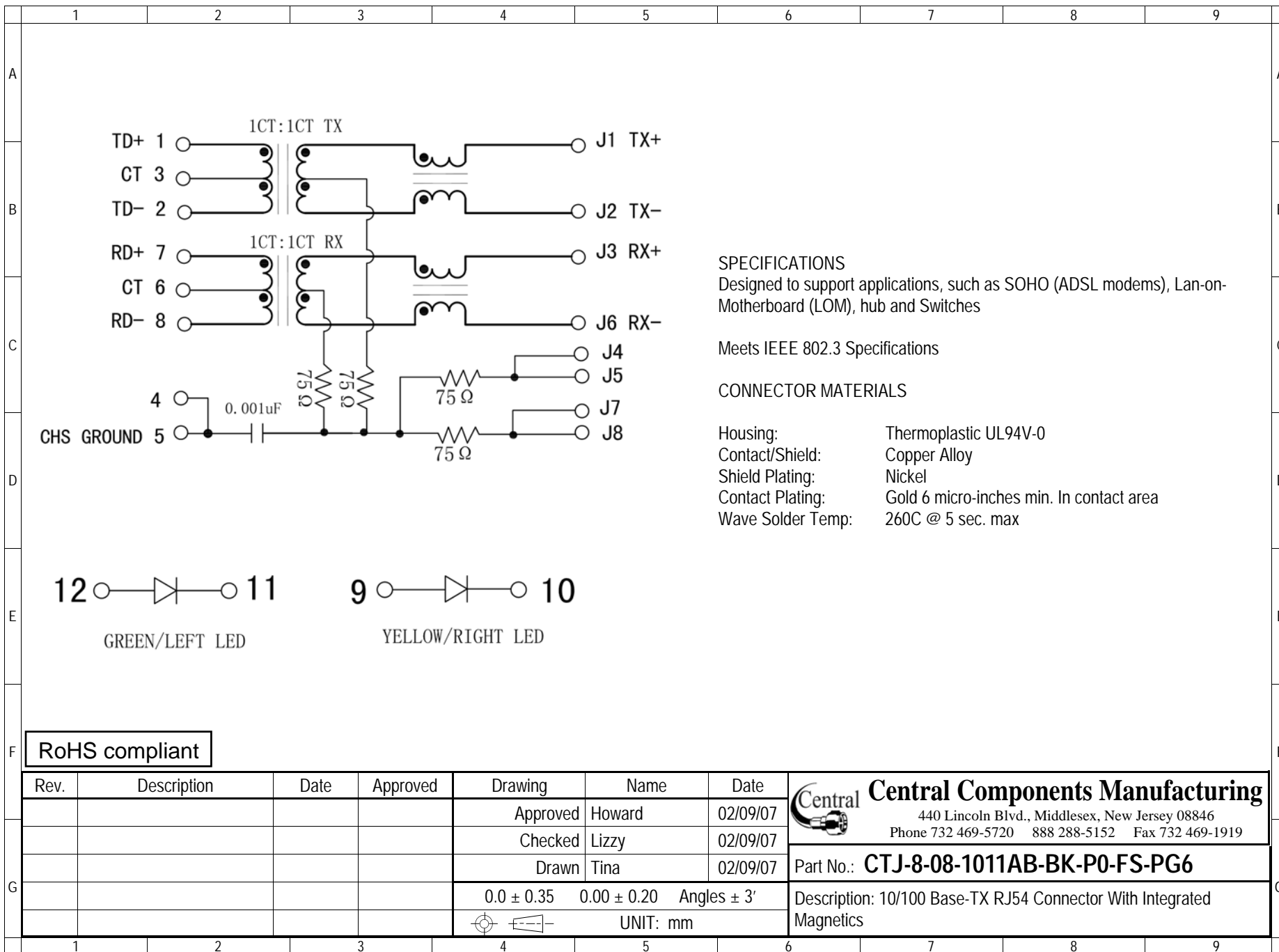
Series	Positions	Contacts	Style	Color	Plating	Options	Panel Grounds
CTJ	8	08	1011AB	BK	PX	XX	PGX
Modular jack	8 positions	8 contacts	1011AB type	BK=Black	P0=6μ" gold P1=15μ" gold P2=30μ" gold P3=50μ" gold	[blank]=None FS=Full shield	Blank=None 1=Top (single) 2=Top 4=Sides 6=Top & sides

RoHS compliant

Rev.	Description	Date	Approved	Drawing	Name	Date
				Approved	Howard	02/09/07
				Checked	Lizzy	02/09/07
				Drawn	Tina	02/09/07
				0.0 ± 0.35	0.00 ± 0.20	Angles ± 3'
				UNIT: mm		

Central Components Manufacturing
 440 Lincoln Blvd., Middlesex, New Jersey 08846
 Phone 732 469-5720 888 288-5152 Fax 732 469-1919

Part No.: **CTJ-8-08-1011AB-BK-P0-FS-PG6**
 Description: 10/100 Base-TX RJ54 Connector With Integrated Magnetics



SPECIFICATIONS

Designed to support applications, such as SOHO (ADSL modems), Lan-on-Motherboard (LOM), hub and Switches

Meets IEEE 802.3 Specifications

CONNECTOR MATERIALS

- Housing: Thermoplastic UL94V-0
- Contact/Shield: Copper Alloy
- Shield Plating: Nickel
- Contact Plating: Gold 6 micro-inches min. In contact area
- Wave Solder Temp: 260C @ 5 sec. max

RoHS compliant

Rev.	Description	Date	Approved	Drawing	Name	Date
				Approved	Howard	02/09/07
				Checked	Lizzy	02/09/07
				Drawn	Tina	02/09/07
				0.0 ± 0.35	0.00 ± 0.20	Angles ± 3'
					UNIT: mm	

Central Components Manufacturing
 440 Lincoln Blvd., Middlesex, New Jersey 08846
 Phone 732 469-5720 888 288-5152 Fax 732 469-1919

Part No.: **CTJ-8-08-1011AB-BK-P0-FS-PG6**

Description: 10/100 Base-TX RJ54 Connector With Integrated Magnetics