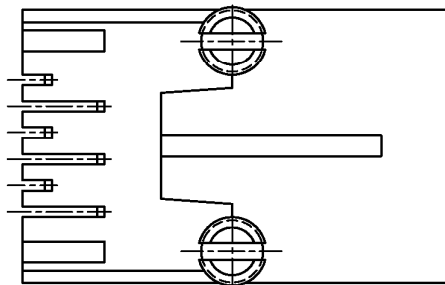
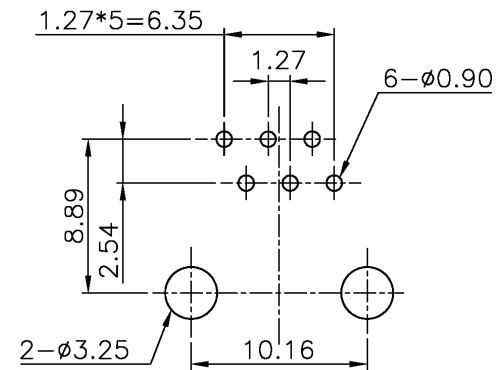


SPECIFICATIONS

Contact Material: Phosphor Bronze
 Plating Material: Gold over Nickel in contact.
 Tin over Nickel in solder area
 Plastic Housing: Engineering Thermoplastic
 Flammability Rating UL94V-0

PCB LAYOUT/TOP VIEW



RoHS compliant

Series	Positions	Contacts	Style	Color	Plating	Options
CTJ	X	XX	B1	BK	PX	XX
PCB mount modular jack, side entry	4,6,8	2,4,6,8	Side entry With flange	BK=Black	P1=15u" gold P2=30u" gold P3=50u" gold	[blank]=None WF=No flange

Rev.	Description	Date	Approved	Drawing	Name	Date
				Approved	Howard	08/28/08
				Checked	Lizzy	08/28/08
				Drawn	Tina	08/28/08
				0.0 ± 0.35	0.00 ± 0.20	Angles ± 3'
				UNIT: mm		

Central Components Manufacturing
 440 Lincoln Blvd., Middlesex, New Jersey 08846
 Phone 732 469-5720 888 288-5152 Fax 732 469-1919

Part No.: **CTJ-6-06-B1-BK-PX-WF**

Description: Side Entry PCB Jack (6P6C)