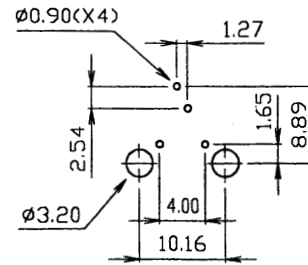
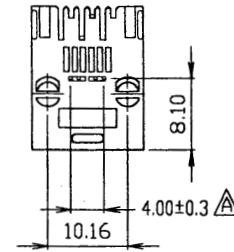
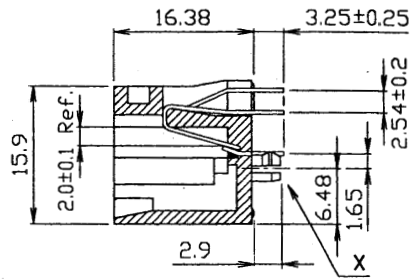
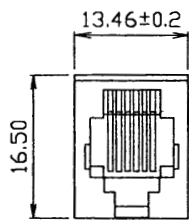


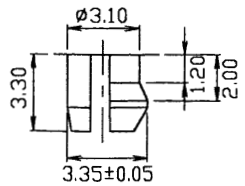
SPECIFICATIONS

Housing material: PBT polyester, mixed glass fiber, black
 Contact material: Phosphor bronze, 0.45mm round
 Contact plating: Gold over 40-50µ" nickel
 Bridge contacts: Phosphor bronze, ø0.40mm
 Bridge contact plating: Gold flash (std) or selective gold 50µ" over nickel

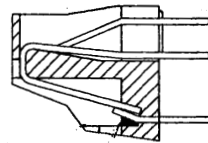
Cavity conforms to FCC rules and regulations Part 68, Subpart F



PC Board Layout



DETAIL X



Note: Also available with 50µ" gold plating on contacts and shorting buss.

RoHS compliant

Series	Positions	Contacts	Style	Color	Plating
CTJ	6	02	DSB	BK	P3
Modular jack	6=6 positions	02=2 contacts	D=Style D DSB=Style D with shorting bar DSB50=Style D with selective gold plate on shorting bar	BK=Black	P1=15µ" gold P2=30µ" gold P3=50µ" gold

Rev.	Description	Date	Approved	Drawing	Name	Date
				Approved	Howard	03/10/01
				Checked	Lizzy	03/10/01
				Drawn	Tina	03/10/01
				0.0 ± 0.35	0.00 ± 0.20	Angles ± 3°
				UNIT: mm		

Central Components Manufacturing
 440 Lincoln Blvd., Middlesex, New Jersey 08846
 Phone 732 469-5720 888 288-5152 Fax 732 469-1919

Part No.: **CTJ-6-02-DSB-BK-P3**

Description: Modular jack, 6P2C, top entry PCB, shorting buss, mounting pegs, black insulator