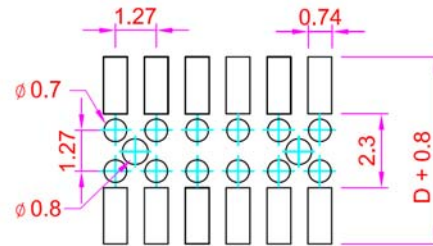
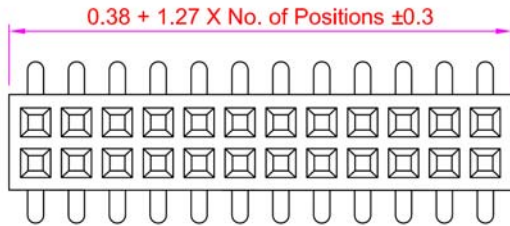
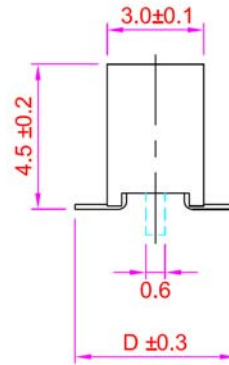
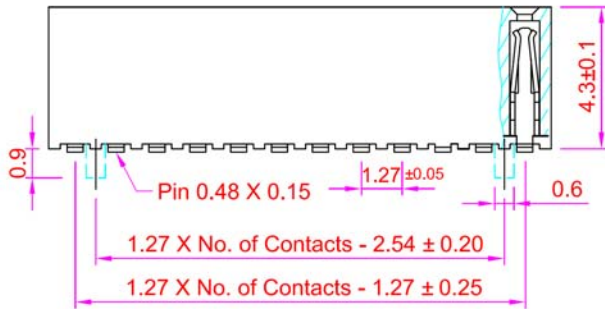


**Recommended
P.C. Board SMD Layout**



SPECIFICATIONS

Current Rating:	1 Amp
Insulator Resistance:	1000 Megohms min.
Contact Resistance:	20m ohms max.
Withstanding:	AC 300V
Contact Material:	Phosphor Bronze
Insulator Material:	Polyester, UL94V-0 LCP
Contact Plating:	Gold Flash (std)
Operating Temp:	-40°C ~ +105°C



Series	Rows	Type	Positions	Pin Spread	Plating	Options	Packing
CRS	X	SMBE	XX	X	XX	X	XX
.050" x .050" Receptacle Strip	01=Single Row 02=Dual Row	Surface Mount Bottom Entry 4.3mm Profile	Single Row: 03-50 Dual Row: 06-100	A=4.5 std B=4.8	TN=Tin SGXX=Selective Gold GDXX=Gold XX=Flash if blank, 10,15,30u"	Blank=None M=Metal Cap P=Plastic Cap F=Mylar Film CP=Centering Peg	TB=Tube TR=Tape & Reel

RoHS compliant

Rev.	Description	Date	Approved	Drawing	Name	Date
				Approved	Howard	08/21/08
				Checked	Lizzy	08/21/08
				Drawn	Tina	08/21/08
				0.0 ± 0.35	0.00 ± 0.20	Angles ± 3'
					UNIT: mm	

Central Components Manufacturing
 440 Lincoln Blvd., Middlesex, New Jersey 08846
 Phone 732 469-5720 888 288-5152 Fax 732 469-1919

Part No.: **CRS-2-SMBE-10-A-GD-CP**

Description: .050" x .050" Receptacle Strip