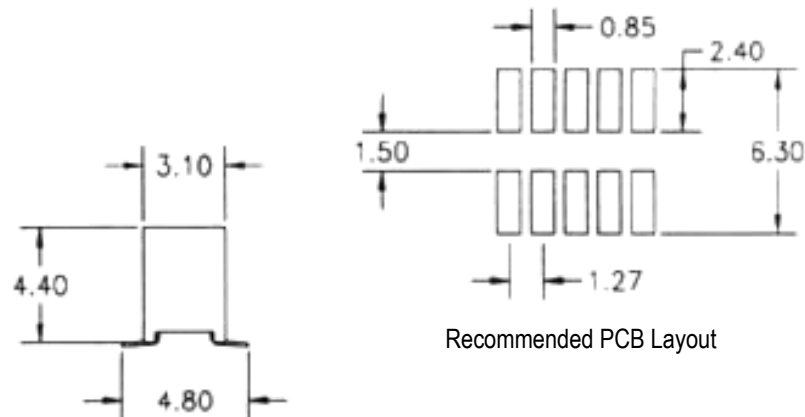


SPECIFICATIONS

Current rating: 1 amp
 Contact material: Phosphor bronze
 Contact plating: Gold or tin over nickel
 Contact resistance: 20 milliohms max.
 Insulation resistance: 500 megohms min.
 Withstanding: 300VAC for 1 min.
 Insulator material: Glass-filled polyester, UL94V-0
 Operating temperature: -40°C to +105°C



Series	Rows	Contacts	Plating	Options
CRS	XX	XX	XX	XX
1.27mm receptacle strip	02=Dual row	04-40	TN=Tin SGXX=Selective gold GDXX=Gold XX=Flash if blank; 15, 30, 50μ"	SM=Surface mount

RoHS compliant

Rev.	Description	Date	Approved	Drawing	Name	Date
				Approved	Howard	08/10/99
				Checked	Lizzy	08/10/99
				Drawn	Tina	08/10/99
				0.0 ± 0.35	0.00 ± 0.20	Angles ± 3'
				UNIT: mm		

Central Components Manufacturing
 440 Lincoln Blvd., Middlesex, New Jersey 08846
 Phone 732 469-5720 888 288-5152 Fax 732 469-1919

Part No.: **CRS-02-XX-XX-SM**
 Description: Receptacle strip, dual row, .05" x .05", top entry, surface mount