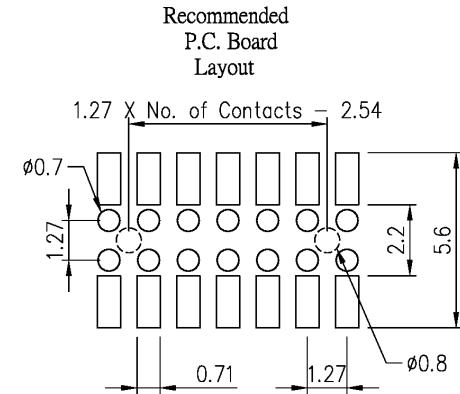
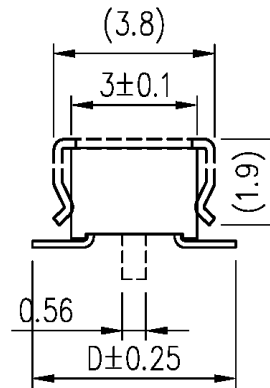
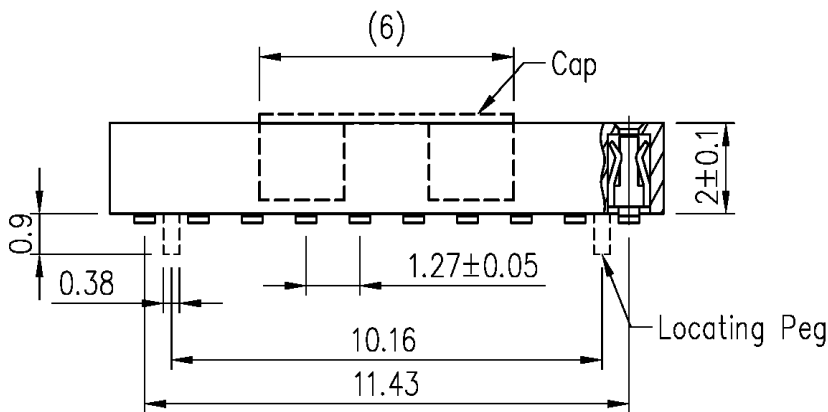


**SPECIFICATIONS**

Current rating: 1 amp  
 Contact material: Phosphor bronze  
 Contact plating: Gold, tin or duplex  
 Contact resistance: 20 milliohms max.  
 Insulation resistance: 1,000 megohms min.  
 Withstanding: 300VAC for 1 min.  
 Operating temperature: -40°C to +105°C  
 Processing temperature: 230°C for 30-60 sec. max.  
 260°C for 10 sec. max.



Series	Rows	Profile	Pos.	Contacts (D)	Plating	Options
CRS	02	LPD	XX	A	XX	XX
Receptacle strip, 1.27mm pitch	02=Dual row	2mm height	04-40	A=4.2 (std) B=4.5 C=4.8 D=5.0	TN=Tin SGXX=Duplex GDXX=Gold XX=Flash if blank, 3, 5, 10, 15µ"	SM=Surface mount CP=Centering pin PPL=Pick cap PPF=Pick film TR=Tape and reel

RoHS compliant

Rev.	Description	Date	Approved	Drawing	Name	Date
				Approved	Howard	08/22/06
				Checked	Lizzy	08/22/06
				Drawn	Tina	08/22/06
				0.0 ± 0.35	0.00 ± 0.20	Angles ± 3'
				UNIT: mm		

**Central Components Manufacturing**  
 440 Lincoln Blvd., Middlesex, New Jersey 08846  
 Phone 732 469-5720 888 288-5152 Fax 732 469-1919

Part No.: **CRS-02-LPD-XX-A-XX-SM**

Description: Receptacle strip, 1.27mm pitch, SMT type