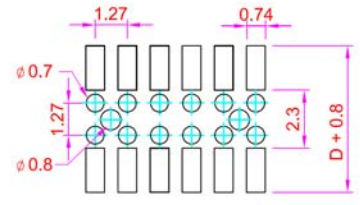
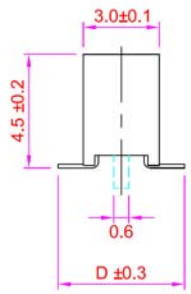
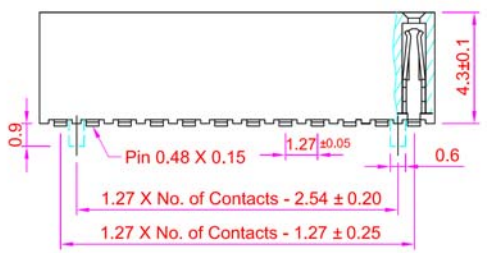


**Recommended  
P.C. Board SMD Layout**



**SPECIFICATIONS**

Current Rating: 1 Amp  
 Insulator Resistance: 1000 Megohms min.  
 Contact Resistance: 20m ohms max.  
 Withstanding: AC 300V  
 Contact Material: Phosphor Bronze  
 Insulator Material: Polyester, UL94V-0 LCP  
 Operating Temp: -40°C ~ +105°C



Series	Rows	Profile	Positions	Plating	Options	Package	CAP
CRS	XX	BELPA	XX	XX	XX	XX	XX
Receptacle Strip .050" (1.27mm) Pitch	01=Single 02=Dual	BELPA=4.5mm Bottom Entry	04-60	TN=Tin SGXX=Selective Gold GDXX=Gold XX=flash if blank, 10,15,30u"	Blank=Through Hole SM=Surface Mount CP=Centering Post	TR=Tape & Reel TB=Tube	Blank=None F=Film P=Plastic M=Metal

**RoHS compliant**

Rev.	Description	Date	Approved	Drawing	Name	Date
				Approved	Howard	05/12/07
				Checked	Lizzy	05/12/07
				Drawn	Tina	05/12/07
				0.0 ± 0.35	0.00 ± 0.20	Angles ± 3°
				UNIT: mm		

**Central Components Manufacturing**  
 440 Lincoln Blvd., Middlesex, New Jersey 08846  
 Phone 732 469-5720 888 288-5152 Fax 732 469-1919

Part No.: **CRS-02-BELPA-XX-XX-SM-XX-XX**

Description: Receptacle strip, .050" pitch, bottom entry surface mount

