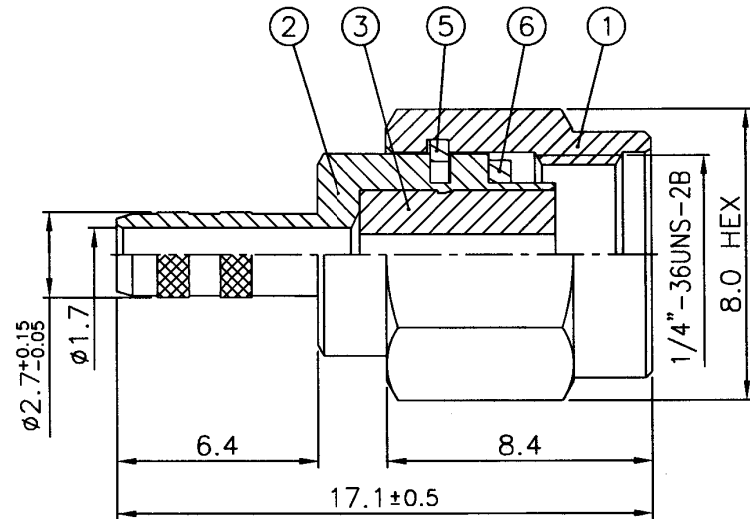
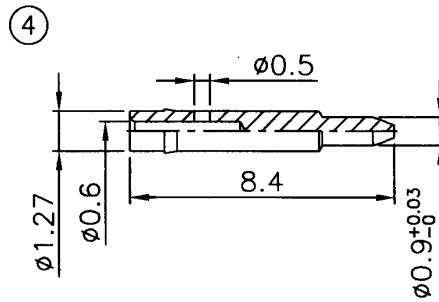
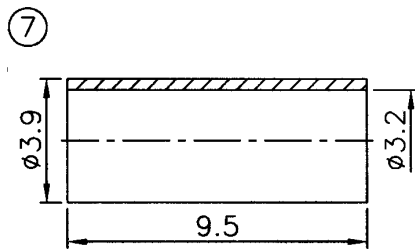


RECOMMENDED
CABLE STRIPPING DIM'S



| Item | Description | Material | Finish |
|------|-------------|-------------------------------|---|
| 1 | Shell | Brass per QQ-B-626 | Nickel 100 μ " over copper |
| 2 | Body | Brass per QQ-B-626 | Nickel 100 μ " over copper |
| 3 | Insulator | Teflon, MIL-P-19468 | Natural |
| 4 | Contact | Brass per QQ-B-626 | Gold 30 μ " over nickel 100 μ " over copper |
| 5 | C Ring | Beryllium copper per QQ-C-530 | None |
| 6 | Gasket | Rubber | Red |
| 7 | Ring | Brass per QQ-B-626 | Gold 3 μ " over nickel 100 μ " over copper |

RoHS compliant

| Rev. | Description | Date | Approved | Drawing | Name | Date |
|------|---------------|----------|----------|----------------|-----------------|-----------------|
| A | Address, wire | 02/13/06 | Tom | Approved | Howard | 02/10/01 |
| | | | | Checked | Lizzy | 02/10/01 |
| | | | | Drawn | Tina | 02/10/01 |
| | | | | 0.0 \pm 0.35 | 0.00 \pm 0.20 | Angles \pm 3' |
| | | | | | | UNIT: mm |

Central Components Manufacturing
 440 Lincoln Blvd., Middlesex, New Jersey 08846
 Phone 732 469-5720 888 288-5152 Fax 732 469-1919

Part No.: **CRF-SMA-7801-BNTG-A**

Description: SMA male crimp connector for RG316/U