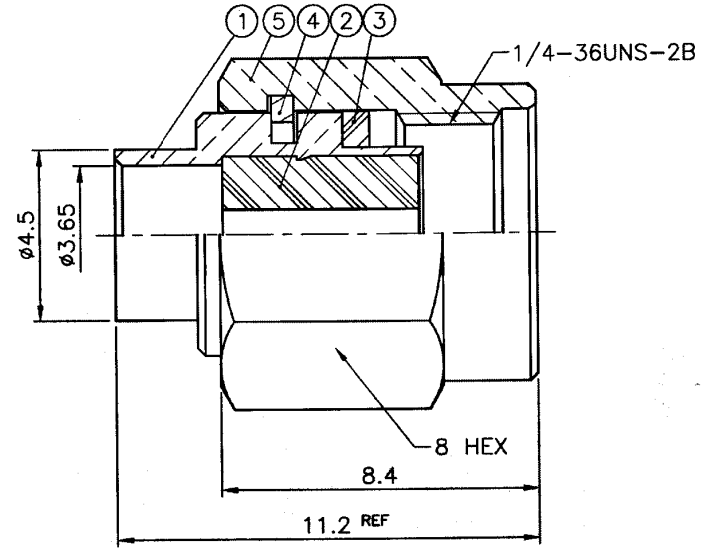
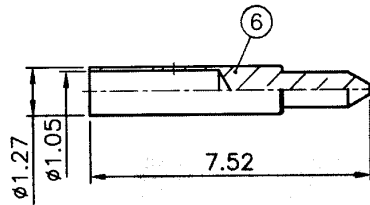


RECOMMENDED  
CABLE STRIPPING DIM'S  
(建議剝線尺寸)



Item	Name	Material	Finish
1	Body	Brass	Gold 3 $\mu$ m over nickel over copper
2	Insulator	Teflon	White
3	Gasket	Silicone	Red
4	C Ring	Beryllium copper	None
5	Shell	Brass	Nickel over copper
6	Contact pin	Brass	Gold 30 $\mu$ m over nickel over copper

RoHS compliant

Rev.	Description	Date	Approved	Drawing	Name	Date
				Approved	Howard	02/04/04
				Checked	Lizzy	02/04/04
				Drawn	Tina	02/04/04
				0.0 $\pm$ 0.35	0.00 $\pm$ 0.20	Angles $\pm$ 3'
						UNIT: mm

**Central Components Manufacturing**  
 440 Lincoln Blvd., Middlesex, New Jersey 08846  
 Phone 732 469-5720 888 288-5152 Fax 732 469-1919

Part No.: **CRF-SMA-7801-24BNTG**

Description: SMA direct solder plug (for 0.141")