

5/8-24UNEF-2A

5/8-24UNEF-2A

∅22

13.4 A/F

22

38.1

∅20

∅15.7

1.5

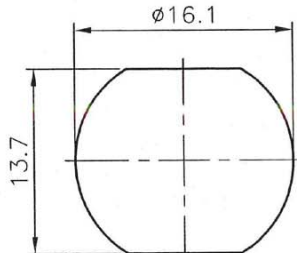
∅15.9

∅19.9

19 HEX

2.5

1. MAX. PANEL THICKNESS=6.5mm



RECOMMENDED MOUNTING HOLE

Item	Name	Material	Finish
1	Body	Brass	Nickel over Copper
2	Insulator	Teflon	White
3	Contact Pin	Phosphor Bronze	Gold over Nickel over Copper
4	Body	Brass	Nickel over Copper
5	Gasket	Silicone	Red
6	Washer	SS41	Nickel over Copper
7	Nut	Brass	Nickel over Copper

RoHS compliant

Rev.	Description	Date	Approved	Drawing	Name	Date
				Approved	Howard	05/20/08
				Checked	Lizzy	05/20/08
				Drawn	Tina	05/20/08
				0.0 ± 0.35	0.00 ± 0.20	Angles ± 3°
				UNIT: mm		

Central Components Manufacturing
 440 Lincoln Blvd., Middlesex, New Jersey 08846
 Phone 732 469-5720 888 288-5152 Fax 732 469-1919

Part No.: **CRF-N-7378CS-500BF001B**

Description: N Jack To Bulkhead Jack Adaptor