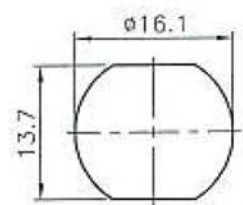


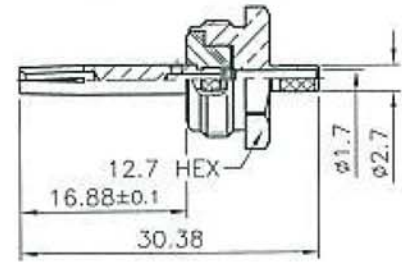
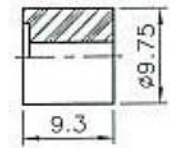
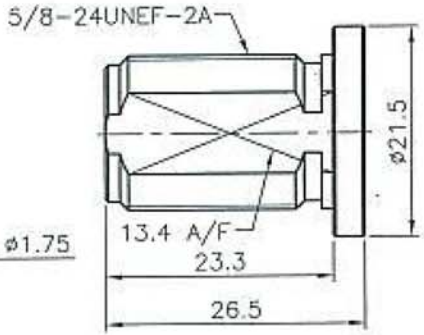
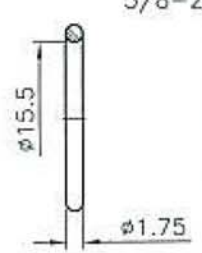
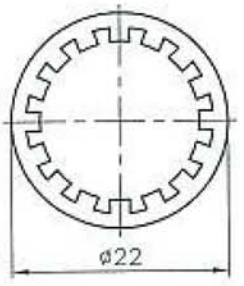
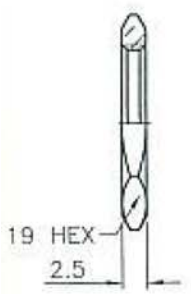
FOR CUSTOMER



RECOMMENDED
CABLE STRIPPING DIM'S
(建議剝線尺寸)



RECOMMENDED
MOUNTING HOLE
(建議架設孔)



Crimped Ferrule: Hex Crimp Size .128" (3.25mm)
Solder Contact Pin
Max Panel Thickness: 8.5mm

Item	Name	Material	Finish
1	Body	Brass	Nickel over Copper
2	Insulator	Teflon	White
3	Contact Pin	Phosphor Bronze	Gold over Nickel over Copper
4	Insulator	Teflon	White
5	Braid Holder	Brass	Nickel over Copper
6	Ferrule	Copper	Nickel over Copper
7	Gasket	Rubber	Black
8	Washer	Brass	Nickel over Copper
9	Nut	Brass	Nickel over Copper

RoHS compliant

Rev.	Description	Date	Approved	Drawing	Name	Date
				Approved	Howard	04/29/11
				Checked	Lizzy	04/29/11
				Drawn	Tina	04/29/11
				0.0 ± 0.35	0.00 ± 0.20	Angles ± 3'
				UNIT: mm		

Central Components Manufacturing
440 Lincoln Blvd., Middlesex, New Jersey 08846
Phone 732 469-5720 888 288-5152 Fax 732 469-1919

Part No.: **CRF-N-7361DS-509BF000B**

Description: N Bulkhead Crimp Jack