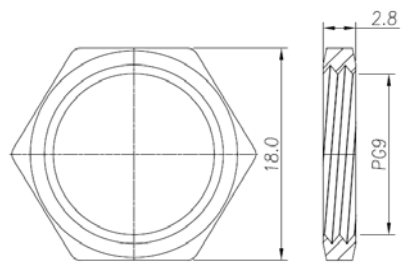
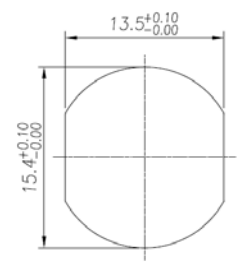


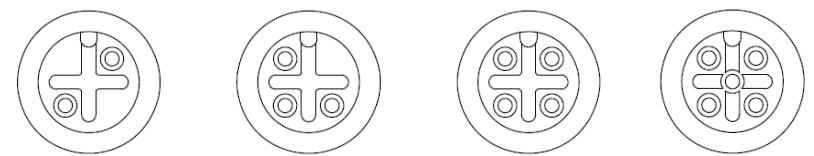
SPECIFICATIONS
 Current Rating: 5A
 Voltage Rating: 125V
 Housing: Plastic, UL94V-0, Black
 Contact: Copper Alloy
 O-Ring: EPDM
 Nut: Stainless Steel
 Shell: Stainless Steel
 Contact Finish: Gold over Nickel



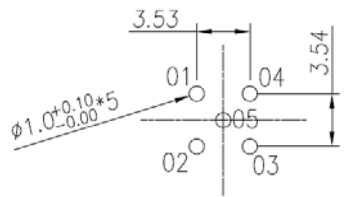
NUT



RECOMMEND PANEL CUT-OUT



2 POS. 3 POS. 4 POS. 5 POS.



RECOMMEND P.C.B LAYOUT

Series	Type	Style	Positions	Plating
CRF	M12	KR4004	0X	GD10
RF Connector	M12 Circular	KR4004 style	02-05	10µ" Gold

RoHS compliant

Rev.	Description	Date	Approved	Drawing	Name	Date
				Approved	Howard	09/27/12
				Checked	Lizzy	09/27/12
				Drawn	Tina	09/27/12
				0.0 ± 0.35	0.00 ± 0.20	Angles ± 3'
				UNIT: mm		

Central Components Manufacturing
 440 Lincoln Blvd., Middlesex, New Jersey 08846
 Phone 732 469-5720 888 288-5152 Fax 732 469-1919

Part No.: **CRF-M12-KR4004-0X-GD10**

Description: M12 Female 2-5 Pins Panel Side Waterproof

