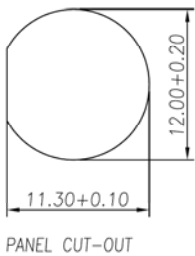
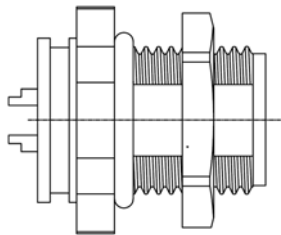


SPECIFICATIONS

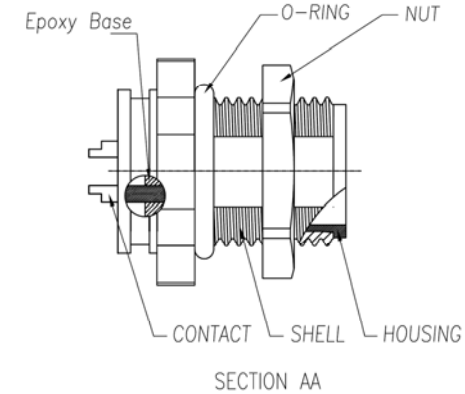
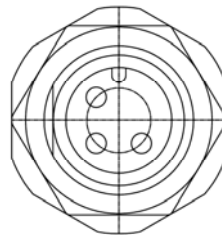
Current Rating: 6 A AC/DC
 Voltage Rating: 125 V AC/DC
 Protection Rating: IP67
 Housing: PBT, UL94V-0, Black
 Contact: Copper Alloy
 Shell: Copper Alloy
 O-Ring: EPDM, Black
 Nut: Copper Alloy
 Epoxy Base: EF400A&EF400B, Black
 Contact Plating: Gold over Nickel
 Shell Plating: Nickel Plating
 Nut Plating: Nickel
 Temperature Range: -40C to +85C



PANEL CUT-OUT



Assembly



Series	Type	Style	Pins	Plating
CRF	M12	AQV10NN	XX	GDXX
Connector	Type=M12	AQZ10NN	03	Gold Plating XX=Flash if blank 10, 60u"

RoHS compliant

Rev.	Description	Date	Approved	Drawing	Name	Date
				Approved	Howard	05/11/12
				Checked	Lizzy	05/11/12
				Drawn	Tina	05/11/12
				0.0 ± 0.35	0.00 ± 0.20	Angles ± 3'
				UNIT: mm		

Central Components Manufacturing
 440 Lincoln Blvd., Middlesex, New Jersey 08846
 Phone 732 469-5720 888 288-5152 Fax 732 469-1919

Part No.: **CRF-M12-AQV10NN-XX-XX**

Description: M12 Panel Side Male Type 3 Pin Waterproof Connector