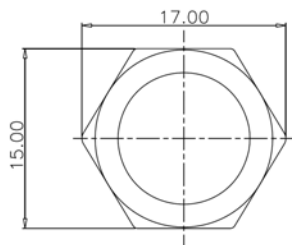
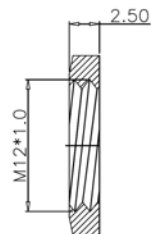


SPECIFICATIONS

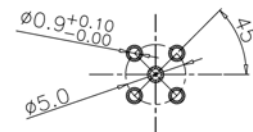
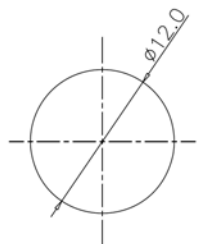
Current Rating: 5A
 Voltage Rating: 125V
 Housing: Plastic, UL94V-0, Black
 Contact: Copper Alloy
 Shell: Stainless Steel
 O-Ring: EPDM
 Finish: Gold over Nickel



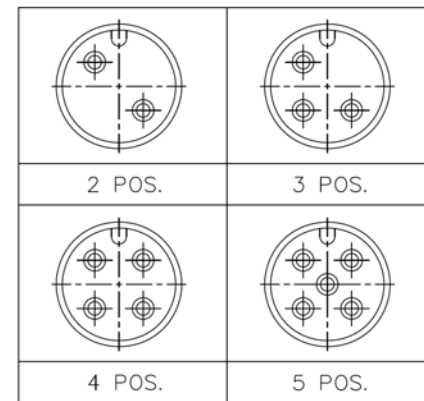
NUT



RECOMMEND PANEL CUT-OUT



RECOMMEND P.C.B LAYOUT



Series	Type	Style	Pins	Plating
CRF	M12	2002NM	XX	GD
Connector	Type=M12	2002NM Style	02,03,04,05	Gold Plating

RoHS compliant

Rev.	Description	Date	Approved	Drawing	Name	Date
				Approved	Howard	01/06/14
				Checked	Lizzy	01/06/14
				Drawn	Tina	01/06/14
				0.0 ± 0.35	0.00 ± 0.20	Angles ± 3'
					UNIT: mm	

Central Components Manufacturing
 440 Lincoln Blvd., Middlesex, New Jersey 08846
 Phone 732 469-5720 888 288-5152 Fax 732 469-1919

Part No.: **CRF-M12-2002NM-XX-GD**

Description: M12 Male Panel Side Waterproof Connector