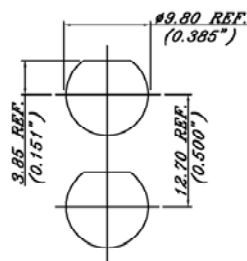
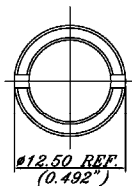
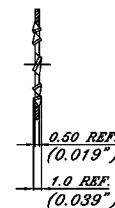
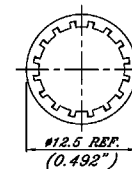
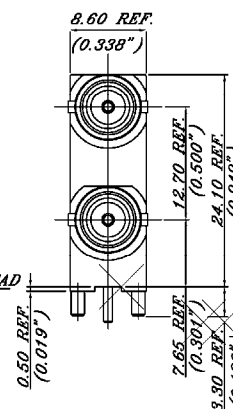
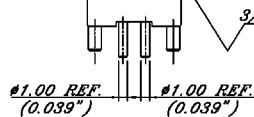
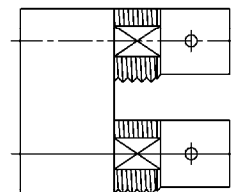
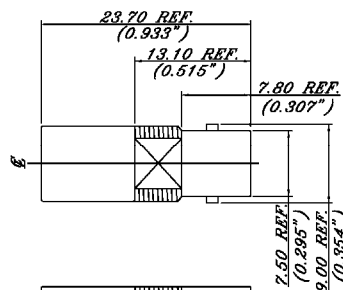


RECOMMEND P.C.B. LAYOUT



PANEL CUTOUT



ROUND NUT

SPECIFICATIONS

Voltage Rating:	500V
Contact Resistance:	3.0 Milliohms Max.
Insulation Resistance:	5000 Megohms Min.
Impedance:	75 ohms
Return Loss:	-30dB min/750 MHz
Withstanding:	1000 V
Mating/Unmating:	500 cycles
Temp Range:	-65C to 165C
Thermal Shock:	MIL STD 202, Method 107, Cond. B
Physical Shock:	MIL STD 202, Method 204, Cond. B

Item	Name	Material & Treatment
1	Body	Nickel over Zinc
2	Female Contact	Gold Plating over Phosphor Bronze
3	Extension Contact	Gold Plating over Brass
4	Insulators	Delrin with 20% Teflon
5	Retention Washer	Nickel Plating over Brass
6	Lock Washer	Nickel Plating over Steel
7	Nut	Nickel Plating over Brass

RoHS compliant

Rev.	Description	Date	Approved	Drawing	Name	Date
				Approved	Howard	06/01/07
				Checked	Lizzy	06/01/07
				Drawn	Tina	06/01/07
				0.0 ± 0.35	0.00 ± 0.20	Angles ± 3'
				UNIT: mm		



Central Components Manufacturing

440 Lincoln Blvd., Middlesex, New Jersey 08846
Phone 732 469-5720 888 288-5152 Fax 732 469-1919

Part No.: **CRF-BNCM-M960DB-B**

Description: Dual Port Mini BNC Connector, R/A PCB Mount