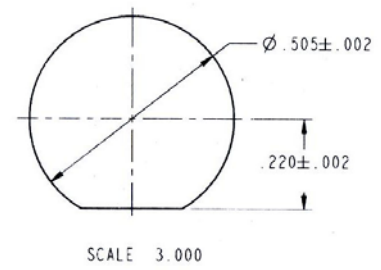


SPECIFICATIONS
 Impedance: 50 OHM
 Withstanding: 1500 VRMS, MIN
 Durability: 500 Cycles Min

RECOMMENDED MOUNTING HOLE DIMENSIONS



Item	Name	Material	Plating
1	Center Contact	QBe	Gold
2	Body	Brass	Nickel
3	Insulator	Teflon	
4	Gasket	QSn	Nickel
5	Nut	Brass	Nickel
6	Gasket	Rubber	
7	Insulator	Teflon	
8	Gasket	4J29	
9	Gasket	Glass	
10	Center Contact	QBe	Gold
11	Center Contact	Brass	Gold

RoHS compliant

Rev.	Description	Date	Approved	Drawing	Name	Date
				Approved	Howard	06/01/11
				Checked	Lizzy	06/01/11
				Drawn	Tina	06/01/11
				0.0 ± 0.35	0.00 ± 0.20	Angles ± 3'
				UNIT: mm		

Central Components Manufacturing
 440 Lincoln Blvd., Middlesex, New Jersey 08846
 Phone 732 469-5720 888 288-5152 Fax 732 469-1919

Part No.: **CRF-BNC-HKYD2-BGTB-A (GAS)**

Description: BNC Rear Mount Hermetic Receptacle