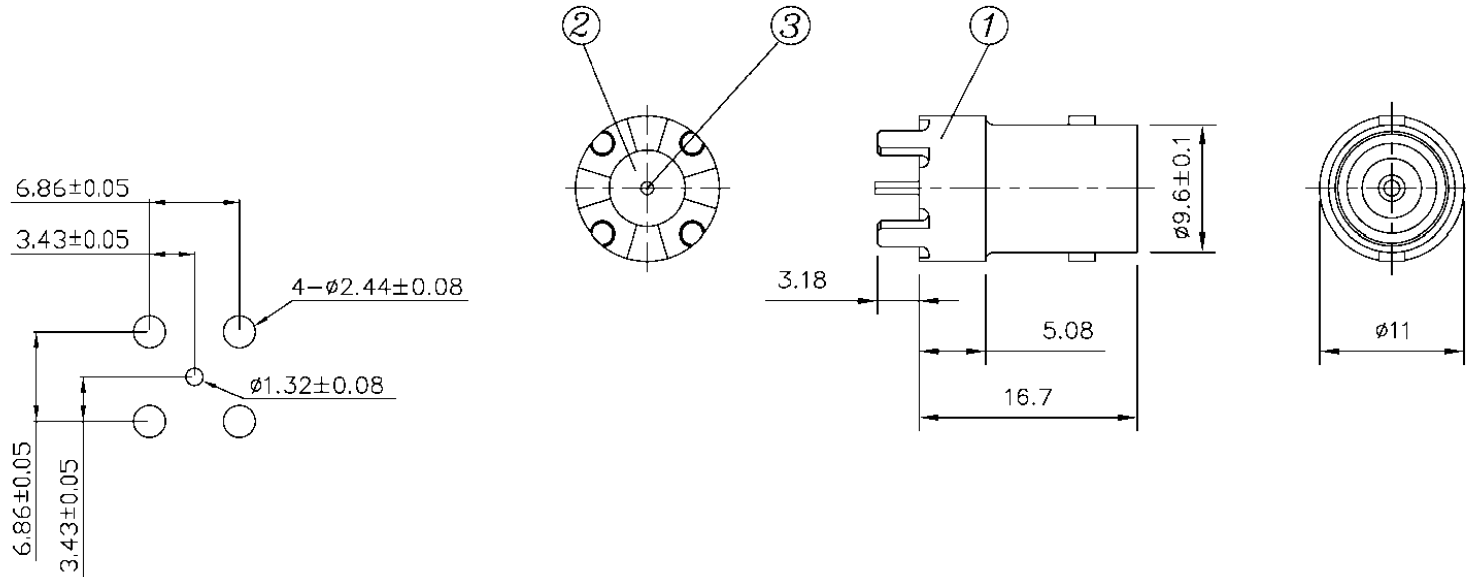
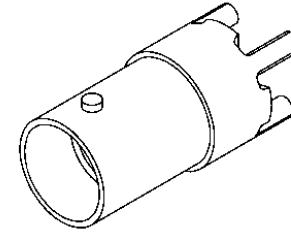


| Item | Name | Material | Finish |
|------|----------------|-----------------|-----------------|
| 1 | Body | Zinc alloy | Tin over nickel |
| 2 | Insulator | TPX | |
| 3 | Center contact | Phosphor bronze | Gold |



RoHS compliant

| Rev. | Description | Date | Approved | Drawing | Name | Date |
|------|-------------|------|----------|--|-------------|-------------|
| | | | | Approved | Howard | 08/10/99 |
| | | | | Checked | Lizzy | 08/10/99 |
| | | | | Drawn | Tina | 08/10/99 |
| | | | | 0.0 ± 0.35 | 0.00 ± 0.20 | Angles ± 3' |
| | | | |  UNIT: mm | | |


Central Components Manufacturing
 440 Lincoln Blvd., Middlesex, New Jersey 08846
 Phone 732 469-5720 888 288-5152 Fax 732 469-1919

Part No.: **CRF-BNC-7BV-41L**

Description: BNC connector, vertical PCB mount