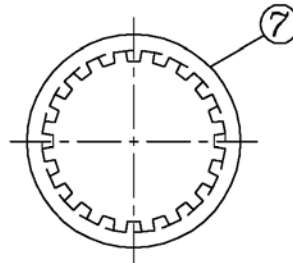
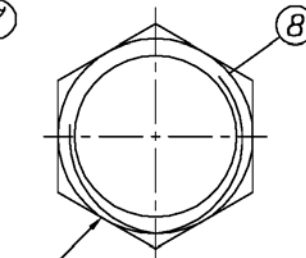


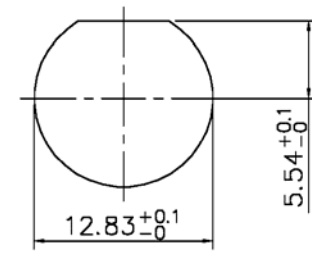
**RECOMMENDED PC BOARD LAYOUT
WITHOUT MOUNTING POSTS**



LOCK WASHER



**1/2-28UNEF-2B
CLAMP NUT**




**RECOMMENDED MOUNTING HOLE
MAXIMUM PANEL THICKNESS: 5.5MM**

Item	Name	Material	Finish	Item	Name	Material	Finish
1	Center contact	Bronze	Gold	5	Mounting post	Bronze	Tin
2	Body	Zinc alloy	Nickel	6	Solder tail	Copper wire	Tin
3	Housing	PBT, UL94V-0	White	7	Washer	Steel	Nickel
4	Insulator	PE-606		8	Nut	Brass	Nickel

RoHS compliant

Rev.	Description	Date	Approved	Drawing	Name	Date
				Approved	Howard	08/10/99
				Checked	Lizzy	08/10/99
				Drawn	Tina	08/10/99
				0.0 ± 0.35	0.00 ± 0.20	Angles ± 3'
				UNIT: mm		



Central Components Manufacturing
440 Lincoln Blvd., Middlesex, New Jersey 08846
Phone 732 469-5720 888 288-5152 Fax 732 469-1919

Part No.: **CRF-BNC-7BR-02311**

Description: BNC jack, high profile, 75 ohm, right angle, PCB mount

