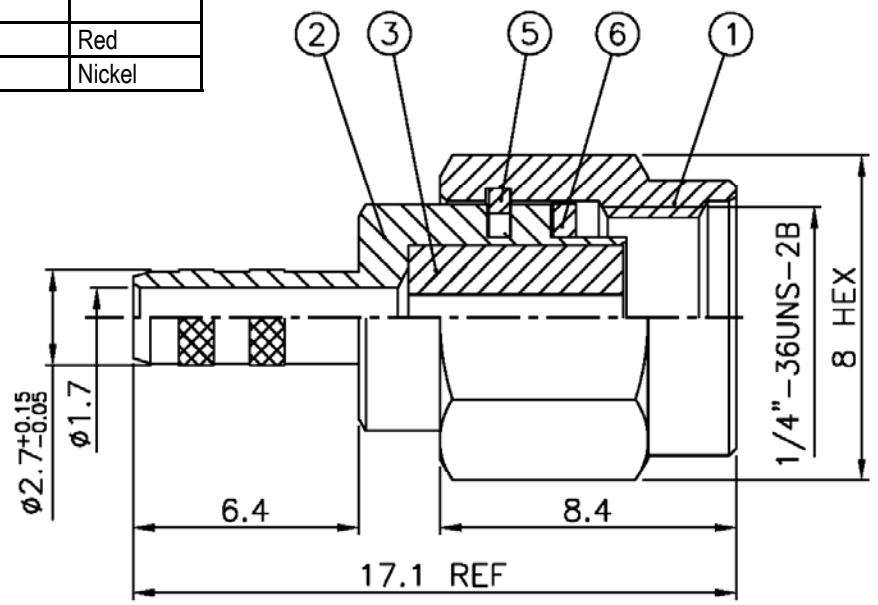
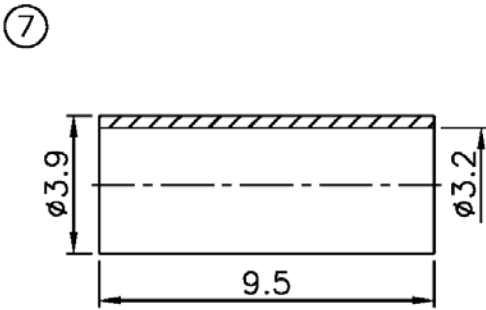
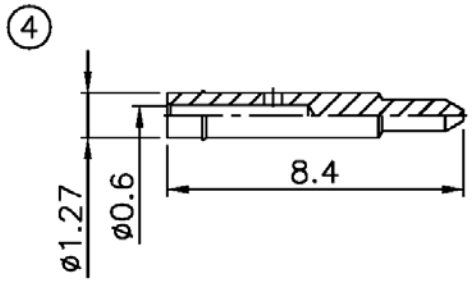


Item	Name	Material	Finish
1	Shell	Stainless steel	Passivated
2	Body	Stainless steel	Passivated
3	Insulator	Teflon	White
4	Pin	Brass	Gold 30μ"
5	C Ring	BeCu	
6	Gasket	Rubber	Red
7	Ring	Brass	Nickel



RoHS compliant

Rev.	Description	Date	Approved	Drawing	Name	Date
				Approved	Howard	05/01/02
				Checked	Lizzy	05/01/02
				Drawn	Tina	05/01/02
				0.0 ± 0.35	0.00 ± 0.20	Angles ± 3'
				UNIT: mm		

Central Components Manufacturing
 440 Lincoln Blvd., Middlesex, New Jersey 08846
 Phone 732 469-5720 888 288-5152 Fax 732 469-1919

Part No.: **CRF-7801-SNTGD-M1**

Description: SMA crimp plug for RG174/U, RG 188/U and RG316/U