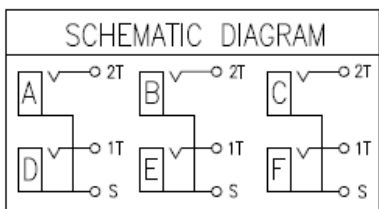


T:1.6 Dimensions of PC board holes  
Tolerance : ±0.1(Printed-side view)

UNLESS OTHERWISE SPECIFIED, TOLERANCE ON DECIMAL: ±0.3



Item	Name	Material	Finish
1	Housing	PBT	UL-94V-0
2	Washer	PBT	UL-94V-0
3	Cover	ABS	UL94V-0
4	Bushing	C2680 t=0.4	MB: Cu Cu/Sn Plated
5	Terminal	C2680 t=0.4	MB: Cu Cu/Sn Plated
6	Terminal	C2680 t=0.4	MB:Cu Cu/Sn Plated

Series	Style	Positions	Metal Cover	Busing Plating	Cover Plating	Terminal Plating	Insulator Color
CPRJ	WSP24	X	X	X	X	X	X (XXXXX)
RCA Phone Jack	Side Entry PCB Mount	1,2,4,6,8	Blank=(plastic) F=Full FG=Full Grounded PR=Pairs CX=Custom	T=Tin (std)	T=Tin (std)	T=Tin (std)	K=Black Y=Gray R=Red G=Green W=White O=Orange E=Yellow B=Brown L=Blue

RoHS compliant

Rev.	Description	Date	Approved	Drawing	Name	Date
				Approved	Howard	12/29/05
				Checked	Lizzy	12/29/05
				Drawn	Tina	12/29/05
				0.0 ± 0.35	0.00 ± 0.20	Angles ± 3'
				UNIT: mm		

**Central Components Manufacturing**  
440 Lincoln Blvd., Middlesex, New Jersey 08846  
Phone 732 469-5720 888 288-5152 Fax 732 469-1919

Part No.: **CPRJ-WSP24-6-X-X-X-X-XX**

Description: Pin Jack