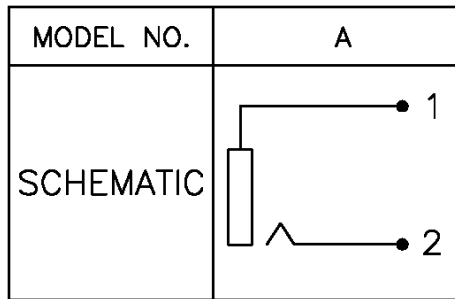


PC Board Hole Layout  
(Bottom View)



Item	Name	Material	Finish
1	Earth terminal	Bronze, t=0.5	Nickel
2	Terminal	Bronze, t=0.5	Tin
3	Body	ABS	White

Series	Type	Bushing Plating	Terminal Plating	Housing/Insulator
CPRJ	DTR0392	X	X	XX
RCA phone jack	Right angle PCB thru-hole mount	N=Nickel (std) G=Gold flash	T=Tin (std) S=Silver G=Gold flash	BK=Black GY=Gray RD=Red GR=Green WT=White OR=Orange YL=Yellow BN=Brown BL=Blue

RoHS compliant

Rev.	Description	Date	Approved	Drawing	Name	Date
A	Plating, colors	11/07/07	Tom	Approved	Howard	04/20/02
				Checked	Lizzy	04/20/02
				Drawn	Tina	04/20/02

0.0 ± 0.35	0.00 ± 0.20	Angles ± 3'
UNIT: mm		

**Central Components Manufacturing**  
 440 Lincoln Blvd., Middlesex, New Jersey 08846  
 Phone 732 469-5720 888 288-5152 Fax 732 469-1919

Part No.: **CPRJ-DTR0392-N-T-WT**

Description: RCA phone jack, side entry PCB mount