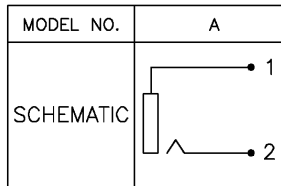


P.C.B. HOLE LAYOUT
(BOTTOM VIEW)



Item	Name	Material	Finish
1	Terminal	Bronze t=0.4	Au Plated
2	Terminal	Bronze t=0.5	Sn Plated
3	Body	PBT	

Series	Style	Schematic	Bushing Plating	Terminal Plating	Insulator Color
CPRJ	0392	A	X	TG	XX
RCA Jack	R/A Through Hole	See Diagram	T=Tin N=Nickel G=Gole	TG=Tin Terminal Gold Ground	BK=Black Other colors avail- able

RoHS compliant

Rev.	Description	Date	Approved	Drawing	Name	Date
				Approved	Howard	08/10/99
				Checked	Lizzy	08/10/99
				Drawn	Tina	08/10/99
				0.0 ± 0.35	0.00 ± 0.20	Angles ± 3'
						UNIT: mm

Central Components Manufacturing
 440 Lincoln Blvd., Middlesex, New Jersey 08846
 Phone 732 469-5720 888 288-5152 Fax 732 469-1919

Part No.: **CPRJ-0392-A-T-TG-BK**

Description: RCA Jack