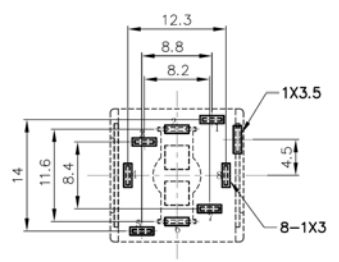
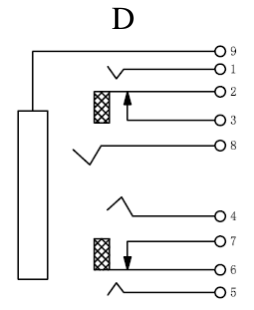
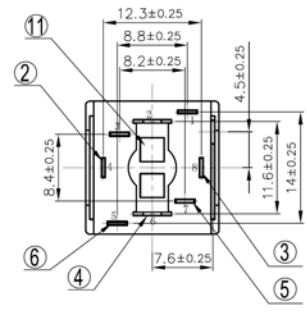
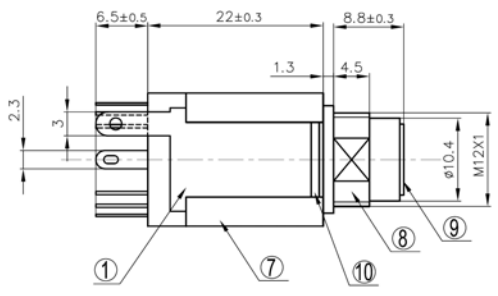
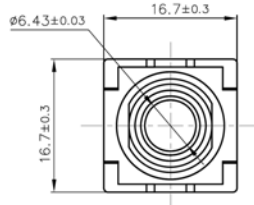
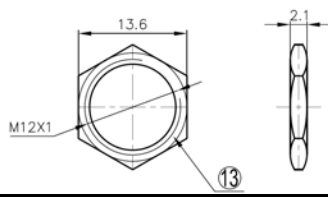
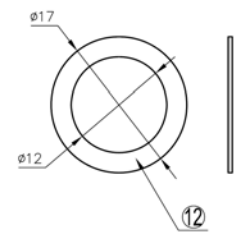


RoHS compliant



P.C.B. Layout (Back View)



SPECIFICATIONS
 Contact Resistance: 30mΩ max
 Insulation Resistance: 100MΩ min. at DC 500V
 Withstanding: AC 500V for one minute

Item	Name	Material	Finish
1	Contact #1	SPCC	D. Ni1
2	Contact #2	QSn6.5-0.1	D. Ag
3	Contact #3	QSn6.5-0.1	D. Ag
4	Contact #4	QSn6.5-0.1	D. Ag
5	Contact #5	H62	D. Ag
6	Contact #6	QSn6.5-0.1	D. Ag
7	Housing	PBT	Black
8	Plastic Head	PBT	Black
9	Inner Circle	Brass	D. Ni1Sn3
10	Plastic Block	PBT	Black
11	Insulation Block	POM	White
12	Hex Nut		D. Ni1
13	Washer	SPCC	D. Ni1

Series	Style	Bushing	Schematic	Bushing Plating	Terminal Plating	Housing Color	Back Cover	Oprions
CPJ	J618	XXX	D	E	X	BK	XX	XX
Phone Jack	6.3mm Panel Mount	PRT=Plastic with 4.5mm threaded PRTM=Plastic with 7.5mm threaded	See chart	E=None	S=Silver (std) T=Tin G=Gold	BK=Black (std) Other colors available	CB=Closed Back OB=Open Back	Blank=None SP=With stopper HW=With hardware

Rev.	Description	Date	Approved	Drawing	Name	Date
				Approved	Howard	09/02/08
				Checked	Lizzy	09/02/08
				Drawn	Tina	09/02/08
				0.0 ± 0.35	0.00 ± 0.20	Angles ± 3'
				UNIT: mm		

Central Components Manufacturing
 440 Lincoln Blvd., Middlesex, New Jersey 08846
 Phone 732 469-5720 888 288-5152 Fax 732 469-1919

Part No.: **CPJ-J618-PRT-X-E-S-BK-XX-HW**

Description: 6.3ø Phone Jack