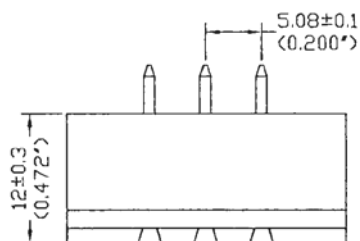
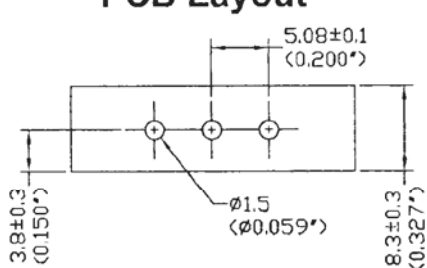
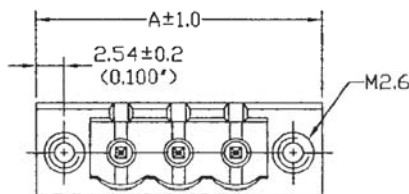
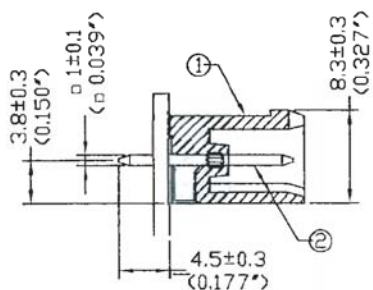


PCB Layout



SPECIFICATIONS

Current Rating: 16 Amp AC300V
 Insulation Resistance: >200MΩ DC500V
 Withstanding: AC200V min
 Operating Temp: -40C to +105C



Pos.	A (mm)
2	20.32
3	25.40
4	30.48
5	35.56
6	40.62
7	45.72
8	50.80
9	55.88
10	60.96
11	66.04
12	71.12
13	76.20
14	81.28
15	86.36
16	91.44
17	96.52
18	101.60
19	106.68
20	111.76
21	116.84
22	121.92

Item	Name	Material	Finish
1	Insulating Body	Polyamide 66 UL94V-0	Green
2	Solder Pin	Brass	Tin Plated

Series	Type	Pitch	Positions	Color
CMTB	ME060	XXX	XX	GN
Terminal block	Board Mount w/ Flanges	500=5.00mm 508=5.08mm	02-22	GN=Green

RoHS compliant

Rev.	Description	Date	Approved	Drawing	Name	Date
				Approved	Howard	09/06/07
				Checked	Lizzy	09/06/07
				Drawn	Tina	09/06/07
				0.0 ± 0.35	0.00 ± 0.20	Angles ± 3'
				UNIT: mm		

Central Components Manufacturing
 440 Lincoln Blvd., Middlesex, New Jersey 08846
 Phone 732 469-5720 888 288-5152 Fax 732 469-1919

Part No.: **CMTB-ME060-508-XX-GN**

Description: Terminal block, Board Mount w/ Flanges