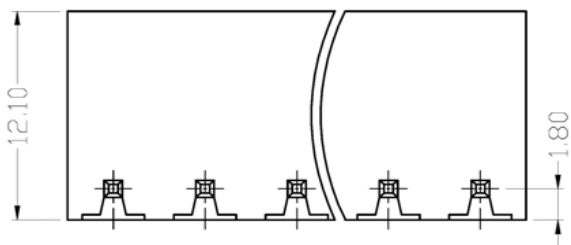


**SPECIFICATIONS**

Pin Header: Brass, Tin Plated  
 Housing: PA66, UL94V-0  
 Voltage Rating: 300V  
 Current Rating: 12A  
 Contact Resistance: 20mΩ  
 Insulation Resistance: 5000MΩ/1000V  
 Withstanding: AC1500V/1min  
 Temp Range: -40C to +105C  
 Max Soldering: +250C for 5 sec.



Series	Type	Pitch	Positions	Color
CMTB	HD515RA	XXX	XX	XX
Terminal block	Right angle	500=5.00mm 508=5.08mm (.200") 750=7.50mm 762=7.62mm	2-24	GN=Green BK=Black

RoHS compliant

Rev.	Description	Date	Approved	Drawing	Name	Date
				Approved	Howard	07/11/05
				Checked	Lizzy	07/11/05
				Drawn	Tina	07/11/05
				0.0 ± 0.35	0.00 ± 0.20	Angles ± 3'
				UNIT: mm		

**Central Components Manufacturing**  
 440 Lincoln Blvd., Middlesex, New Jersey 08846  
 Phone 732 469-5720 888 288-5152 Fax 732 469-1919

Part No.: **CMTB-HD515RA-508-XX-XX**

Description: Terminal block, male, 5.08mm pitch, right-angle