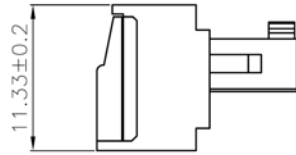
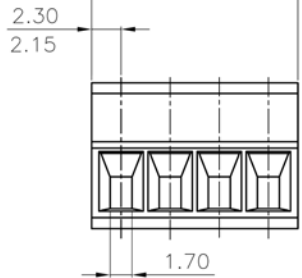


$$\frac{2.30}{2.15}$$

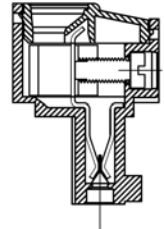
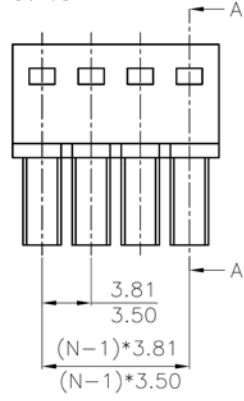
$$(N-1)*3.81+4.6\pm 0.2$$

$$(N-1)*3.50+4.3\pm 0.2$$



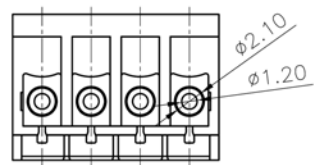
**SPECIFICATIONS**

- Rated Voltage: 300V
- Rated Current: 8A
- Contact Resistance: 20mΩ
- Insulation Resistance: 500MΩ / 1000V
- Withstanding Voltage: AC2000V / 1Min
- Wire Range: 28-16AWG 1.5mm
- Screws: M2 Steel Zinc Plated
- Wire Guard: Phosphor Bronze Ni Plated
- Contact: Brass Ni Plated
- Housing: PA66, UL94V-0
- Max Soldering: +250C for 5 Sec.
- Torque: 0.2Nm (1.71b in)
- Strip Length: 6-7mm
- Temp. Range: -40C ~ +105C



SECTION A-A

N:NUMBER OF CONTACTS



Series	Type	Pitch	Positions	Plating	Color
CMTB	F420	XXX	XX	XX	XX
Terminal block	Wire Mount Plug	350=3.50mm 381=3.81mm	02-24	Blank=Tin GD=Gold	GN=Green BK=Black

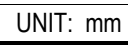
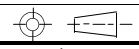
RoHS compliant

Rev.	Description	Date	Approved	Drawing	Name	Date
				Approved	Howard	05/08/06
				Checked	Lizzy	05/08/06
				Drawn	Tina	05/08/06
				0.0 ± 0.35	0.00 ± 0.20	Angles ± 3'
				UNIT: mm		

**Central Components Manufacturing**  
 440 Lincoln Blvd., Middlesex, New Jersey 08846  
 Phone 732 469-5720 888 288-5152 Fax 732 469-1919

Part No.: **CMTB-F420-XXX-XX-XX-XX**

Description: Terminal block, wire mount plug



Angles ± 3'

UNIT: mm