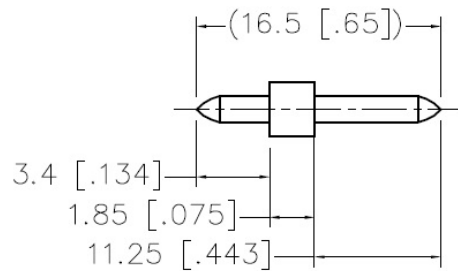


SPECIFICATIONS

Poles: 2-24
 Pitch: 5.0mm
 Pin Dimension: 1.3mm
 Housing Material: PBT 30% Glass Filled
 Solder Pin Material: Brass, Tin Plated



RoHS compliant

Rev.	Description	Date	Approved	Drawing	Name	Date
				Approved	Howard	05/08/12
				Checked	Lizzy	05/08/12
				Drawn	Tina	05/08/12
				0.0 ± 0.35	0.00 ± 0.20	Angles ± 3'
				UNIT: mm		


Central Components Manufacturing
 440 Lincoln Blvd., Middlesex, New Jersey 08846
 Phone 732 469-5720 888 288-5152 Fax 732 469-1919

Part No.: **CMTB-F332NA-500-XX-BK**

Description: Pluggable Terminal Block