

**SPECIFICATIONS**

Voltage Rating: 320V  
 Current Rating: 9A  
 Pin Header: Brass, Tin Plating  
 Housing: PBTUL94V-0  
 Contact Resistance: 20mΩ  
 Insulation Resistance: 5000M Ω / 1000V  
 Withstanding: AC 1500V / 1 Min  
 Wire Range: 0.2-2AWG 0.75mm<sup>2</sup>  
 Max Soldering: +250C, for 5 Sec.  
 Strip Length: 7mm  
 Package: Tape & Reel  
 Temp Range: -40C to +105C

P.C.B. LAYOUT

Series	Type	Pitch	Positions	Color
CMTB	F151	400	XX	XX
Terminal block	Side entry, PCB SMTmount	400=4.00mm	01-03	GY=Gray

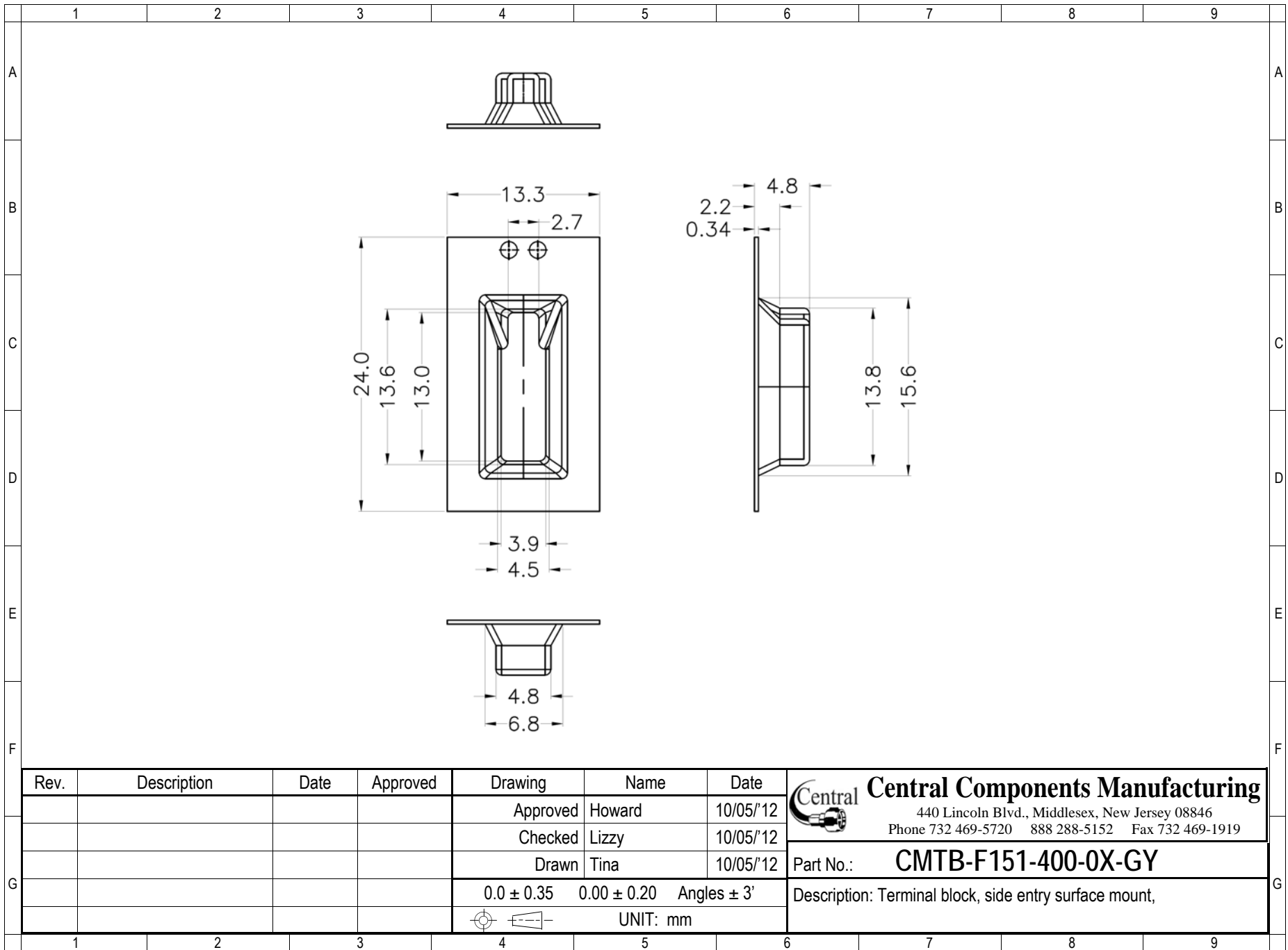
RoHS compliant

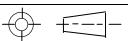
Rev.	Description	Date	Approved	Drawing	Name	Date
				Approved	Howard	10/05/12
				Checked	Lizzy	10/05/12
				Drawn	Tina	10/05/12
				0.0 ± 0.35	0.00 ± 0.20	Angles ± 3'
				UNIT: mm		


**Central Components Manufacturing**  
 440 Lincoln Blvd., Middlesex, New Jersey 08846  
 Phone 732 469-5720 888 288-5152 Fax 732 469-1919

Part No.: **CMTB-F151-400-0X-GY**

Description: Terminal block, side entry surface mount,



Rev.	Description	Date	Approved	Drawing	Name	Date
				Approved	Howard	10/05/12
				Checked	Lizzy	10/05/12
				Drawn	Tina	10/05/12
				0.0 ± 0.35	0.00 ± 0.20	Angles ± 3'
				 UNIT: mm		


**Central Components Manufacturing**  
 440 Lincoln Blvd., Middlesex, New Jersey 08846  
 Phone 732 469-5720 888 288-5152 Fax 732 469-1919

Part No.: **CMTB-F151-400-0X-GY**  
 Description: Terminal block, side entry surface mount,