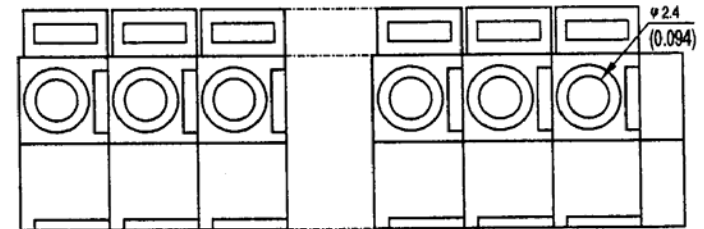
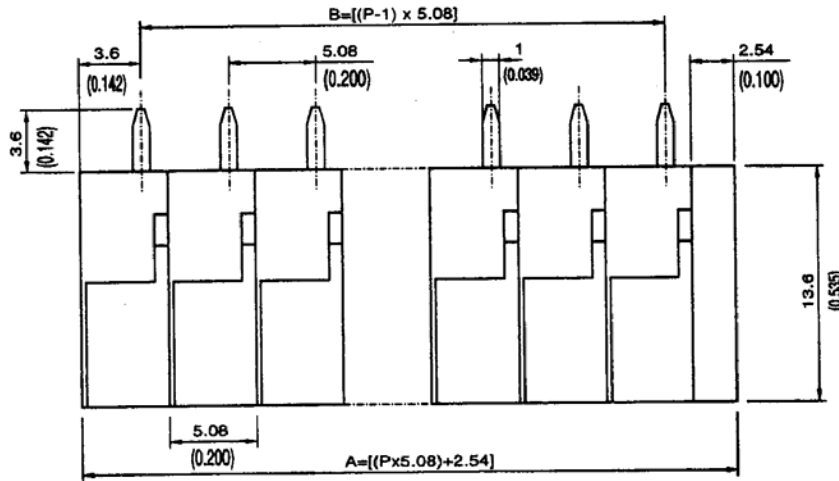
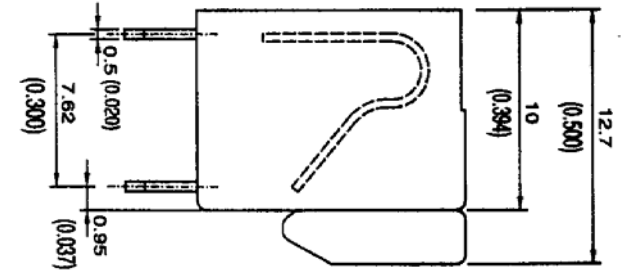


**SPECIFICATIONS**

Current rating: 10 amps  
 Voltage rating: 250VAC  
 Contact material: Brass  
 Contact plating: Tin  
 Spring material: Stainless steel  
 Housing material: Polyamide66, UL94V-0  
 Insulator resistance: 500 megohms min.  
 Withstanding: 2,000VAC min.  
 Wire range: 16-24 AWG  
 Operating temperature: -30°C to +80°C



RoHS compliant

Rev.	Description	Date	Approved	Drawing	Name	Date
				Approved	Howard	08/10/99
				Checked	Lizzy	08/10/99
				Drawn	Tina	08/10/99
				0.0 ± 0.35	0.00 ± 0.20	Angles ± 3'
				UNIT: mm		

**Central Components Manufacturing**  
 440 Lincoln Blvd., Middlesex, New Jersey 08846  
 Phone 732 469-5720 888 288-5152 Fax 732 469-1919

Part No.: **CMTB-66-508-XX-GN**

Description: Screwless terminal block, top entry, 5.08mm pitch