

SPECIFICATIONS

Contact material: Phosphor bronze, C5210R-SH
 Insulator Material: LCP +30% glass fiber, UL94V-0
 Latch material: Nylon 6T +30% glass fiber, UL94V-0
 Spring material: Stainless steel, JIS SUS304-3/4H

Series	Type	Standoff	Color	Plating
CMPCI	114A	92	XX	XX
Mini PCI socket	Type 114A	92=9.2mm	BK=Black BG=Beige	GD3=Gold 3μ" GD15=Gold 15μ"

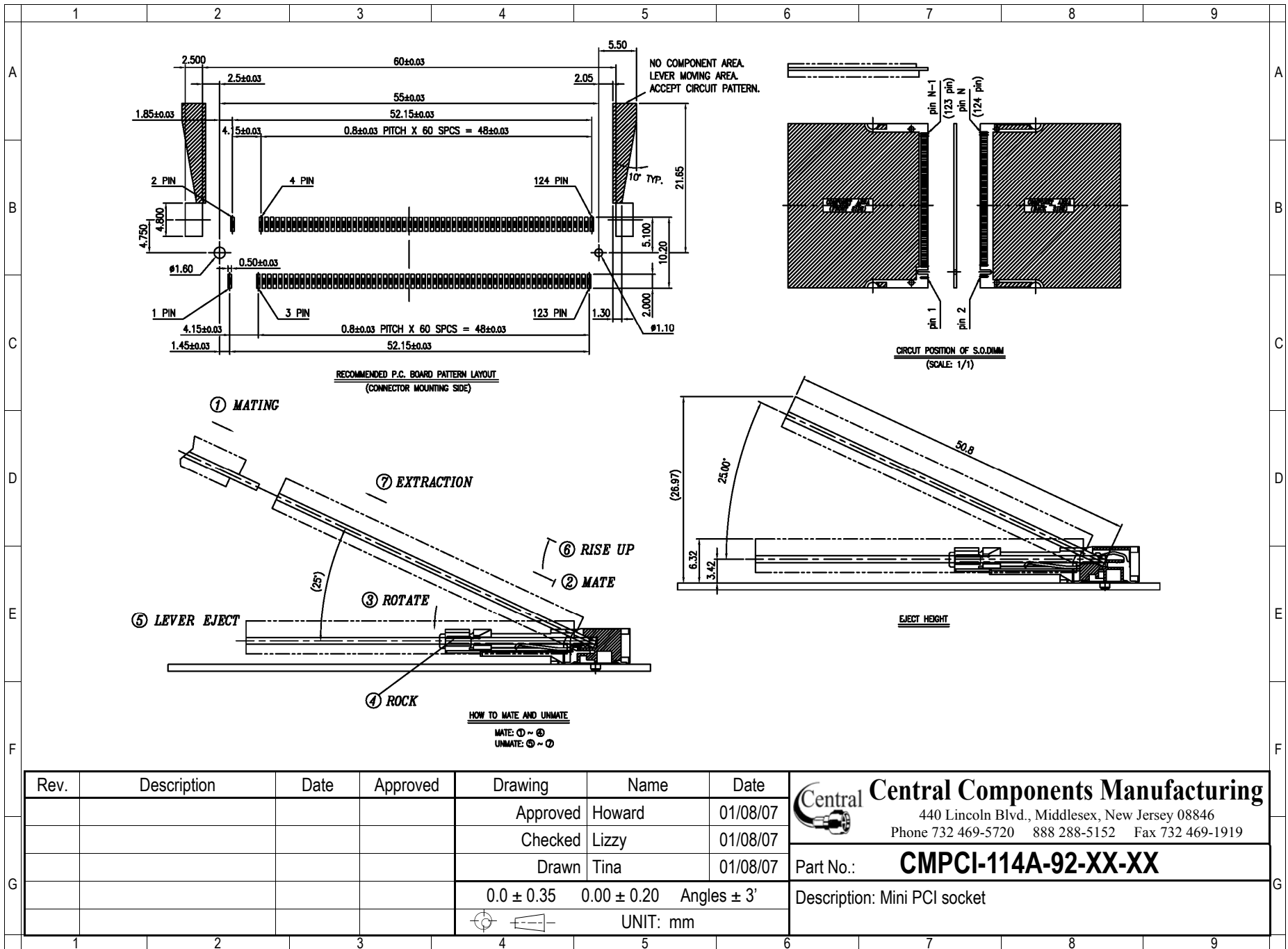
RoHS compliant

Rev.	Description	Date	Approved	Drawing	Name	Date
				Approved	Howard	01/08/07
				Checked	Lizzy	01/08/07
				Drawn	Tina	01/08/07
				0.0 ± 0.35	0.00 ± 0.20	Angles ± 3'
				UNIT: mm		

Central Components Manufacturing
 440 Lincoln Blvd., Middlesex, New Jersey 08846
 Phone 732 469-5720 888 288-5152 Fax 732 469-1919

Part No.: **CMPCI-114A-92-XX-XX**

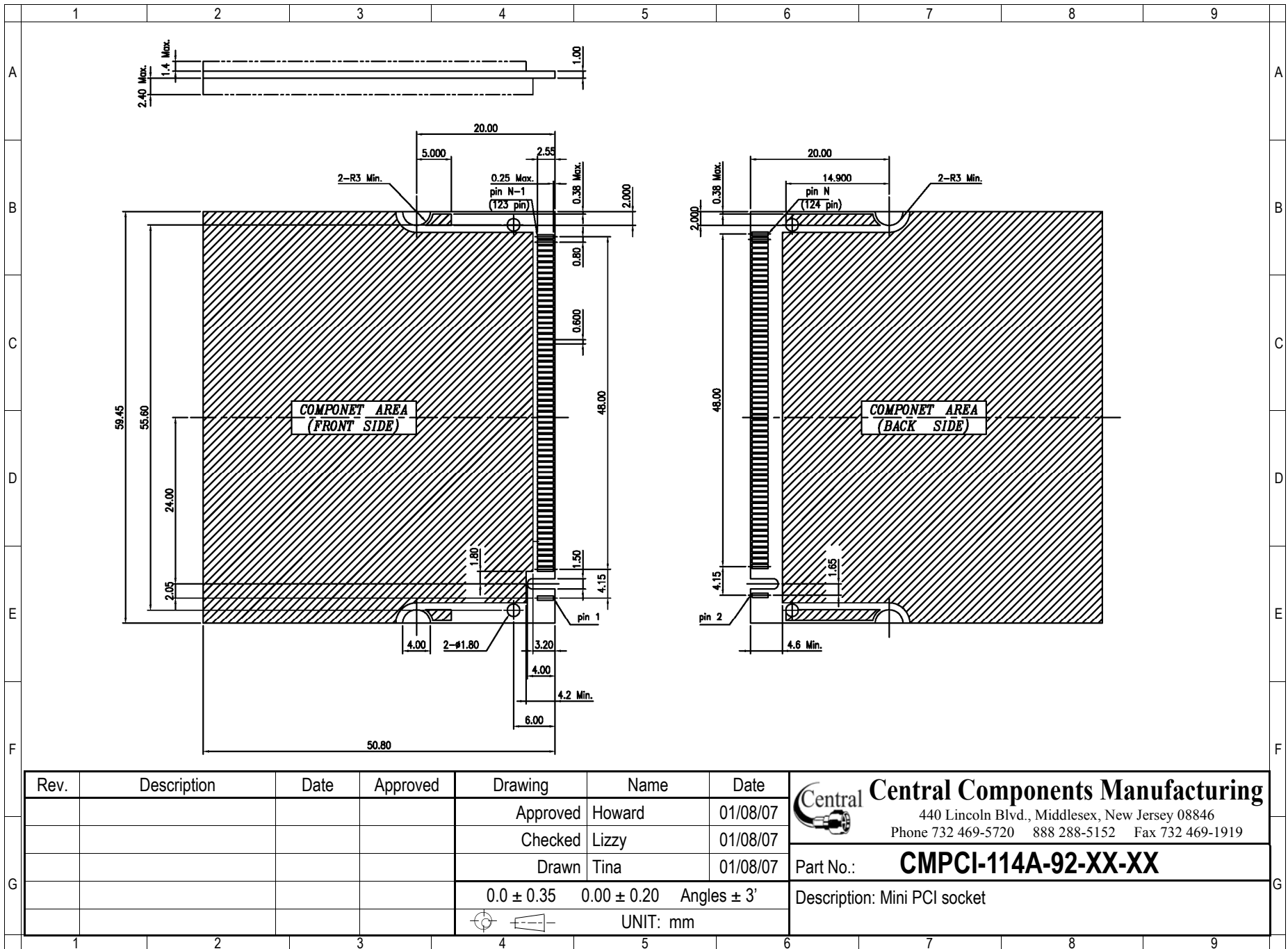
Description: Mini PCI socket




Rev.	Description	Date	Approved	Drawing	Name	Date
				Approved	Howard	01/08/07
				Checked	Lizzy	01/08/07
				Drawn	Tina	01/08/07

Central Components Manufacturing
 440 Lincoln Blvd., Middlesex, New Jersey 08846
 Phone 732 469-5720 888 288-5152 Fax 732 469-1919

Part No.: **CMPCI-114A-92-XX-XX**
 Description: Mini PCI socket



Rev.	Description	Date	Approved	Drawing	Name	Date
				Approved	Howard	01/08/07
				Checked	Lizzy	01/08/07
				Drawn	Tina	01/08/07
				0.0 ± 0.35	0.00 ± 0.20	Angles ± 3'
				UNIT: mm		


Central Components Manufacturing
 440 Lincoln Blvd., Middlesex, New Jersey 08846
 Phone 732 469-5720 888 288-5152 Fax 732 469-1919
 Part No.: **CMPCI-114A-92-XX-XX**
 Description: Mini PCI socket