

SPECIFICATIONS

Voltage rating: 600 VAC/VDC
 Current rating: See table, page 2
 Housing material: Nylon 66, UL 94V-2
 Contact resistance: 10 milliohms max.
 Withstanding: 1500 VAC/min.
 Operating temp.: -40°C to +105°C

A=4.2 X (Pos./2 - 1)
 B=4.2 X Pos./2 + 1.2
 C=4.2 X Pos./2 + 4.8

RoHS compliant

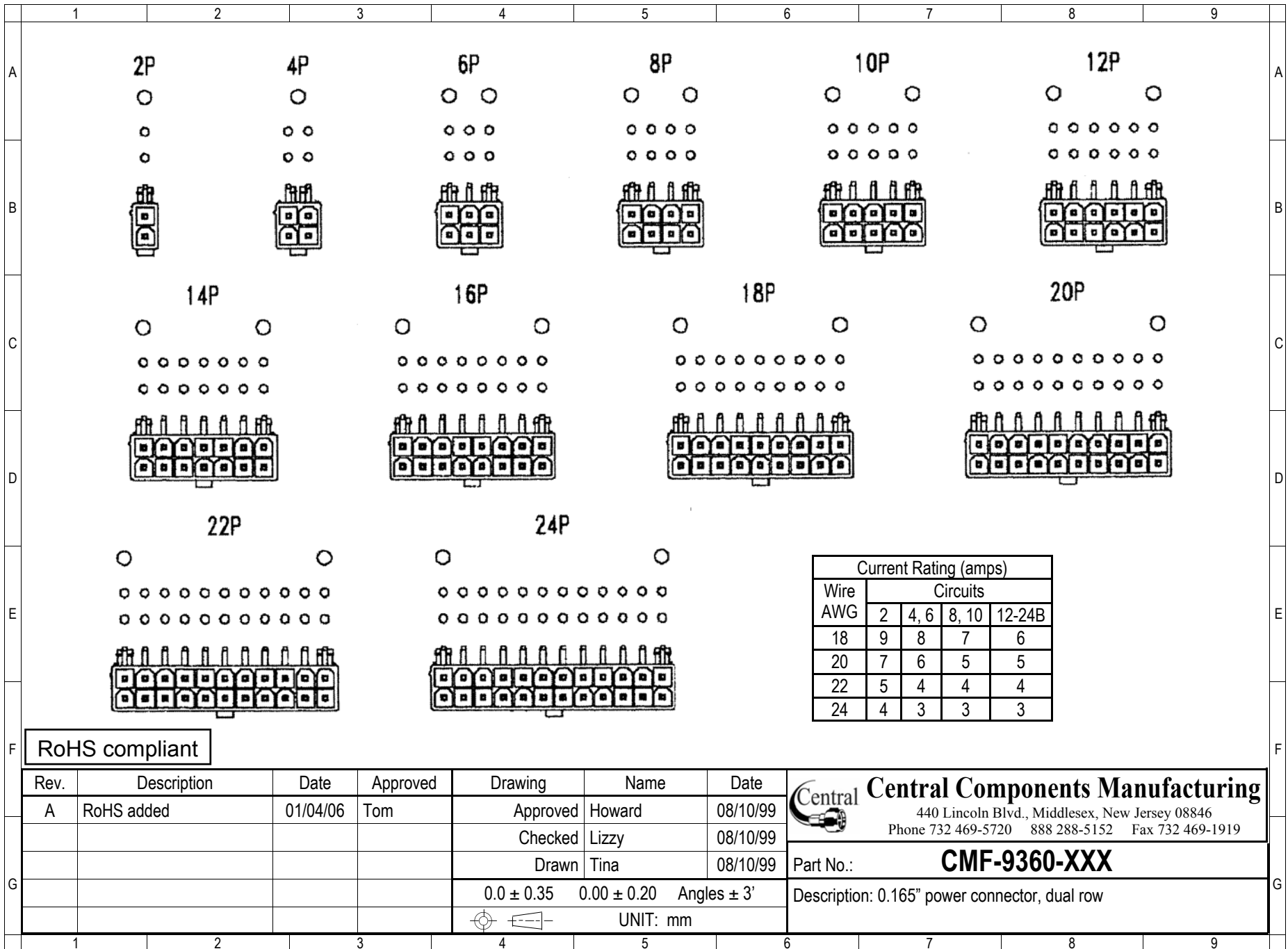
Series	Style	Pins	Mounting
CMF	9360	XX	XX
Mini fit power connector, .165" (4.2mm)	9360	02-12	[blank]=Standard F=Flanges P=Pins

Rev.	Description	Date	Approved	Drawing	Name	Date
A	RoHS added	01/04/06	Tom	Approved	Howard	08/10/99
				Checked	Lizzy	08/10/99
				Drawn	Tina	08/10/99
				0.0 ± 0.35	0.00 ± 0.20	Angles ± 3'
				UNIT: mm		

Central Components Manufacturing
 440 Lincoln Blvd., Middlesex, New Jersey 08846
 Phone 732 469-5720 888 288-5152 Fax 732 469-1919

Part No.: **CMF-9360-XXX**

Description: 0.165" power connector, dual row



2P

4P

6P

8P

10P

12P

14P

16P

18P

20P

22P

24P

Wire AWG	Current Rating (amps)			
	Circuits			
	2	4, 6	8, 10	12-24B
18	9	8	7	6
20	7	6	5	5
22	5	4	4	4
24	4	3	3	3

RoHS compliant

Rev.	Description	Date	Approved	Drawing	Name	Date
A	RoHS added	01/04/06	Tom	Approved	Howard	08/10/99
				Checked	Lizzy	08/10/99
				Drawn	Tina	08/10/99
				0.0 ± 0.35	0.00 ± 0.20	Angles ± 3'
					UNIT: mm	

Central Components Manufacturing
 440 Lincoln Blvd., Middlesex, New Jersey 08846
 Phone 732 469-5720 888 288-5152 Fax 732 469-1919

Part No.: **CMF-9360-XXX**

Description: 0.165" power connector, dual row