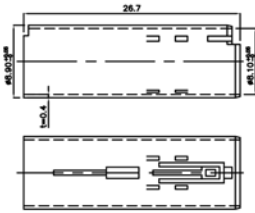
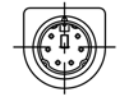
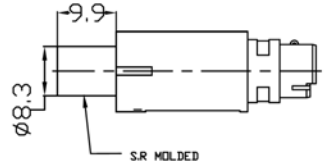
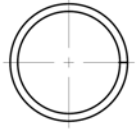
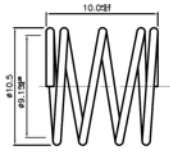
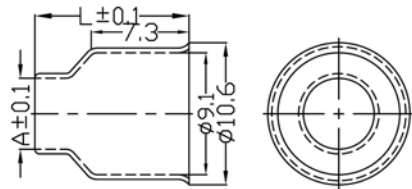


| LOCK | DESCRIPTION |
|------|-------------|
| LOCK |             |
| LOCK |             |
|      | DESCRIPTION |

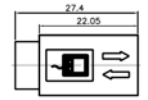
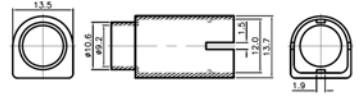
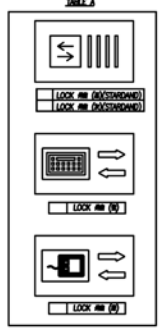


| Code | A    | L    |
|------|------|------|
| A    | Ø5.3 | 11.5 |
| B    | Ø5.8 | 11.1 |
| C    | Ø6.2 | 10.9 |
| D    | Ø6.5 | 11.3 |
| E    | Ø7.0 | 10.8 |



**SPECIFICATIONS**

Rating: 100V AC Max or 12V DC 2A Max  
 Insulation Resistance: 50MΩ Min at 250V DC  
 Withstanding: 250V AC at 1 minute  
 Plastic Cover: ABS  
 Shell: Brass, Nickel Plating  
 POM Ring: POM  
 Housing: PBT  
 Pin: Brass, Gold Flash  
 Spring: Steel, Nickel Plating  
 Metal Cap: Brass, Tin Plating  
 Strength: 2.5kgf Min



RoHS compliant

| Series                | Positions | Wire Inlet | Options              |
|-----------------------|-----------|------------|----------------------|
| CMDX                  | XX        | X          | X                    |
| Wire Mount Mini DIN   | 03-08     | See Table  | Blank=None<br>L=Lock |
| X: P=Male<br>S=Female |           |            |                      |

| Rev. | Description | Date | Approved | Drawing    | Name        | Date        |
|------|-------------|------|----------|------------|-------------|-------------|
|      |             |      |          | Approved   | Howard      | 05/15/09    |
|      |             |      |          | Checked    | Lizzy       | 05/15/09    |
|      |             |      |          | Drawn      | Tina        | 05/15/09    |
|      |             |      |          | 0.0 ± 0.35 | 0.00 ± 0.20 | Angles ± 3' |
|      |             |      |          | UNIT: mm   |             |             |

**Central Components Manufacturing**  
 440 Lincoln Blvd., Middlesex, New Jersey 08846  
 Phone 732 469-5720 888 288-5152 Fax 732 469-1919

Part No.: **CMDX-XX-X-L**

Description: Wiremount Mini DIN