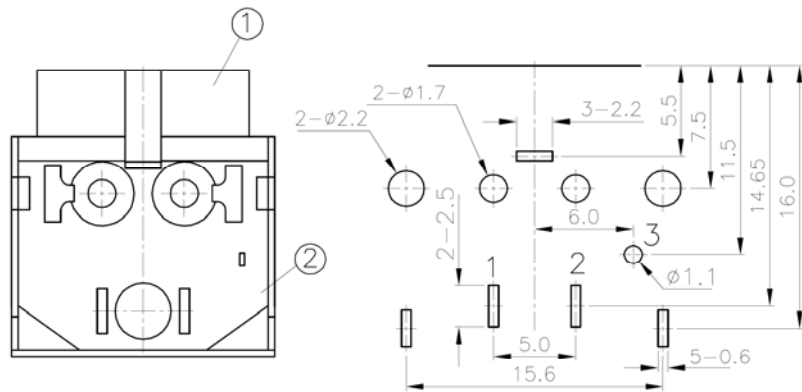
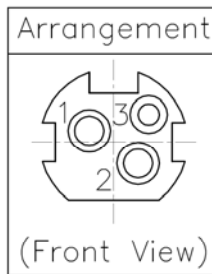


**SPECIFICATIONS**

Current Rating: Pin No. A & B: 20 VDC 7.5A Max.  
 Pin No. C : 20 VDA 1A Max.  
 Withstanding: 250V Rms / min  
 Insulation Resistance: 50 Mohm Min @250VDC  
 Contact Resistance: 30mOhm Max. @20 mA, 1 KHZ  
 Insertion & Withdrawal: Insertion Force=6.0KG Max.  
 Withdrawal Force=0.5—6.0 KG



**HOLE LAYOUT  
 BOTTOM VIEW**

Item	Name	Material	Remarks
1	Body	PBT	UL94V-0
2	Cover	PBT	UL94V-0
3	Earth Terminal	BSR-H 0.4t	Tin
4	AB Terminal	BSR-H 0.3t	Tin
5	C Terminal	SPCC 0.4t	Tin

**RoHS compliant**

Rev.	Description	Date	Approved	Drawing	Name	Date
				Approved	Howard	12/12/01
				Checked	Lizzy	12/12/01
				Drawn	Tina	12/12/01
				0.0 ± 0.35	0.00 ± 0.20	Angles ± 3'
				UNIT: mm		

**Central Components Manufacturing**  
 440 Lincoln Blvd., Middlesex, New Jersey 08846  
 Phone 732 469-5720 888 288-5152 Fax 732 469-1919

Part No.: **CMDJ-03P-S**

Description: DC Socket