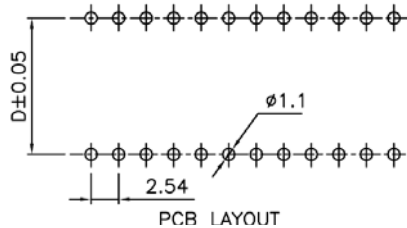


SPECIFICATIONS

Current rating: 1 A AC/D
 Voltage rating: 100V AC/DC
 Contact resistance: 15 mohm max.
 Insulator resistance: 5000M Ohm.
 Withstanding: 1000V AC for 1 min.
 Finish: Gold
 Operating temp.: 40°C to 105°C

DIMENSIONS				
Pos.	A	B	C	D (In)
6	7.62	5.08	10.16	7.62 (0.3)
8	10.16	7.62	10.16	7.62 (0.3)
14	17.78	15.24	10.16	7.62 (0.3)
16	20.32	17.78	10.16	7.62 (0.3)
18	22.86	20.32	10.16	7.62 (0.3)
20	25.40	22.86	10.16	7.62 (0.3)
24	30.48	27.94	10.16	7.62 (0.3)
28	35.56	33.02	10.16	7.62 (0.3)
22	27.94	38.10	12.70	10.16 (0.4)
24	30.48	48.26	17.78	15.24 (0.6)
28	35.56	48.26	17.78	15.24 (0.6)
32	40.64	50.80	17.78	15.24 (0.6)
40	50.80	53.34	17.78	15.24 (0.6)
42	53.34	55.88	17.78	15.24 (0.6)
48	60.96	58.42	17.78	15.24 (0.6)
64	81.28	78.74	26.00	22.86(0.9)



Insulator: PBT, black, (UL 94V-0)
 Contacts: Beryllium copper, gold plated
 Sleeve: Copper alloy

Ordering Information			
Series	Positions	Plating	Options
CMCX	XX	GD	WWT
Machined pin socket XX=3, 4, 6, 9	See chart	GD=Gold	Wire wrap tails

RoHS compliant

Rev.	Description	Date	Approved	Drawing	Name	Date
				Approved	Howard	8/10/99
				Checked	Lizzy	8/10/99
				Drawn	Tina	8/10/99
				0.0 ± 0.35	0.00 ± 0.20	Angles ± 3'
				UNIT: mm		

Central Components Manufacturing
 440 Lincoln Blvd., Middlesex, New Jersey 08846
 Phone 732 469-5720 888 288-5152 Fax 732 469-1919

Part No.: **CMCX-XX-GD-WWT**

Description: Machined pin IC socket, wire wrap type