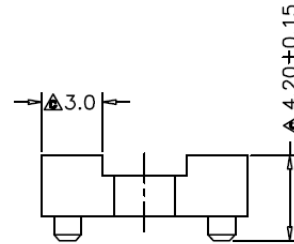
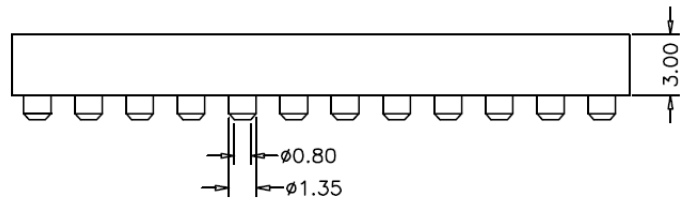


No. of Positions	DIM A*	DIM B*
6	7.62	5.08
8	10.16	7.62
10	12.70	10.16
12	15.24	12.70
14	17.78	15.24
16	20.32	17.78
18	22.86	20.32
20	25.40	22.86
24	30.48	27.94
28	35.56	33.02

SPECIFICATIONS

Current rating: 3A
 Voltage rating: 60V AC/DC
 Contact resistance: 4m μ max
 Pin: Brass CuZn38Pb2
 Clip (4 finger): Heat treated Beyr. Copper
 Insulator (black): Glass filled thermoplastic UL94V-0
 Insertion force: <250g
 Withdrawal force: >50g
 Durability: 200 cycles min.
 Operating temp: Gold plated: -55C to +105C
 Tin plated: -40C to +105C
 Process temp.: +260C for 10 sec. max.



Series	Positions	Pin Plating	Clip Plating	Options
CMCX	XX	XX	XX	SM
Machined pin socket X=row spacing 3=0.300" 4=0.400" 6=0.600" 9=0.900"	06-28 see chart	TN=Tin GD=Gold	TN=Tin GD=Gold	SM=Surface mount

RoHS compliant

Rev.	Description	Date	Approved	Drawing	Name	Date
				Approved	Howard	12/22/08
				Checked	Lizzy	12/22/08
				Drawn	Tina	12/22/08
				0.0 ± 0.35	0.00 ± 0.20	Angles ± 3'
				UNIT: mm		

Central Components Manufacturing
 440 Lincoln Blvd., Middlesex, New Jersey 08846
 Phone 732 469-5720 888 288-5152 Fax 732 469-1919

Part No.: **CMC3-XX-XX-XX-SM**

Description: Machined pin surface mount socket, .100" (2.54mm) pitch 0.165" pin length