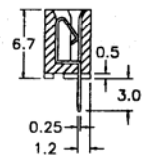
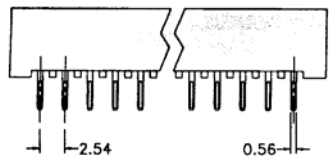
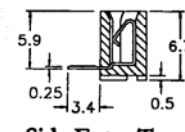
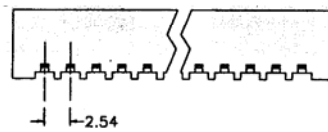


**SPECIFICATIONS**

Current rating: 1 amp  
 Contact material: Phosphor bronze  
 Contact plating: Tin  
 Contact resistance: 20 milliohms max. at 100 mA DC  
 Housing material: PBT 30% glass fill, UL 94V-0  
 Insulator resistance: 5,000 megohm min. at 500 VDC  
 Operating temperature: -55°C to +105°C

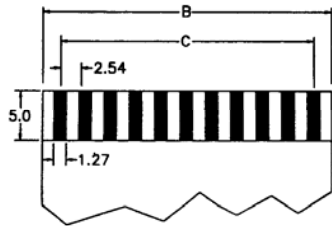


**Top Entry Type**

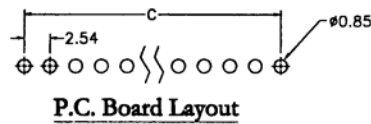


**Side Entry Type**

Dimensions	
A	(No. pos. X 2.54) + 5.48
B	(No. pos. X 2.54) + 3.35
C	(No. pos. -1) X 2.54



**FFC/FPC Dimension**  
 Thickness 0.3± 0.05mm



**P.C. Board Layout**

Series	Positions	Style	Plating
CFPC	XX	XX	TN
.100" FFC/FPC	6-27	ST=Straight RA=Right angle	TN=Tin

RoHS compliant

Rev.	Description	Date	Approved	Drawing	Name	Date
				Approved	Howard	08/10/99
				Checked	Lizzy	08/10/99
				Drawn	Tina	08/10/99
				0.0 ± 0.35	0.00 ± 0.20	Angles ± 3'
				UNIT: mm		

**Central Components Manufacturing**  
 440 Lincoln Blvd., Middlesex, New Jersey 08846  
 Phone 732 469-5720 888 288-5152 Fax 732 469-1919

Part No.: **CFPC-XX-XX-TN**

Description: .100" FFC/FPC connector, non ZIF type