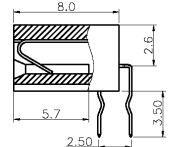
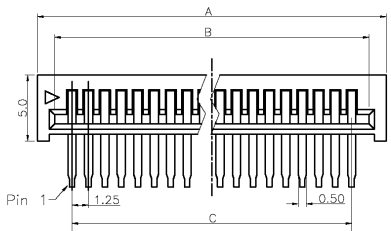


FFC/FPC Dimension
Thickness 0.3±0.05mm

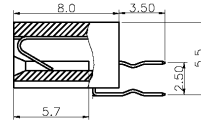
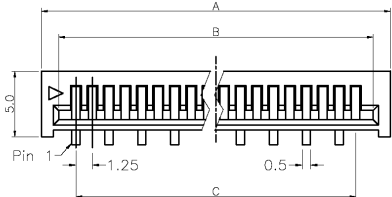


Side Entry

2532-xxTR

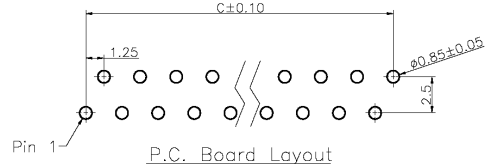
SPECIFICATIONS

- Current Rating: 1 AMP
- Contact Material: Phosphor Bronze
- Contact Resistance: 20mΩ max.
- Housing Material: Glass Filled PBT UL94V-0
- Insulation Resistance: 1000MΩ min.
- Withstanding: AC 500V for 1 minute
- Operating Temp: -55°C~+105°C



Top Entry

2532-xxTS



P.C. Board Layout

RoHS compliant

Series	Pitch	Type	Contacts	Style	Plating	Package
CFPC	100	2532	XX	XX	TN	XX
FPC connector	125=1.25mm	2532 type	4-24	(U=Upper cont) RU=Right angle VU=Vertical	TN=Tin over nickel	TY=Tray TB=Tube

Rev.	Description	Date	Approved	Drawing	Name	Date
				Approved	Howard	02/21/08
				Checked	Lizzy	02/21/08
				Drawn	Tina	02/21/08
				0.0 ± 0.35	0.00 ± 0.20	Angles ± 3'
				UNIT: mm		

Central Components Manufacturing
440 Lincoln Blvd., Middlesex, New Jersey 08846
Phone 732 469-5720 888 288-5152 Fax 732 469-1919

Part No.: **CFPC-125-2532-XX-XX-TN-XX**

Description: 2532 Series FFC/FPC Connector